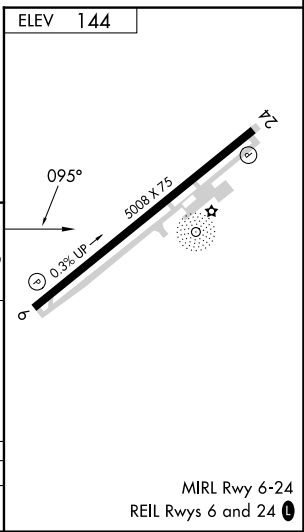
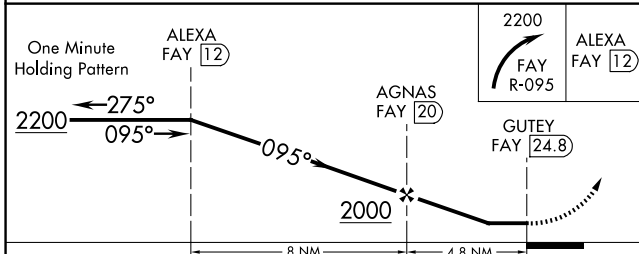
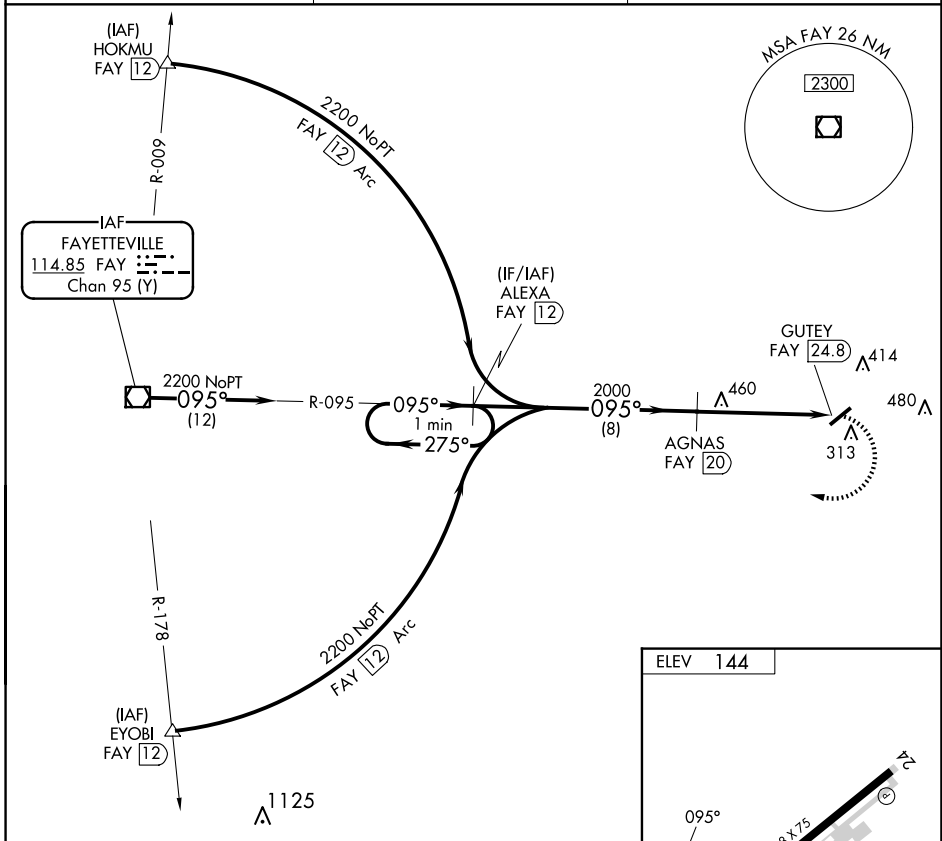


VOR/DME FAY 114.85 Chan 95 (Y)	APP CRS 095°	Rwy Idg TDZE Apt Elev	N/A N/A 144
---	------------------------	-----------------------------	--

VOR/DME-A
CLINTON-SAMPSON COUNTY (CTZ)

<p>▼ When local altimeter setting not received, use Kenansville altimeter setting and increase all MDA 60 feet, and increase Circling Cats C/D visibility ¼ mile.</p>	<p>▲ MISSED APPROACH: Climbing right turn to 2200 on FAY VOR/DME R-095 to ALEXA/FAY 12 DME and hold.</p>	
<p>AWOS-3 119.125</p>	<p>FAYETTEVILLE APP CON 133.0 290.25</p>	<p>UNICOM 122.8 (CTAF) 0</p>



CATEGORY	A	B	C	D
CIRCLING	760-1 616 (700-1)	780-1 636 (700-1)	840-2 696 (700-2)	840-2¼ 696 (700-2¼)

MIRL Rwy 6-24
REIL Rws 6 and 24

SE-2, 16 APR 2026 to 14 MAY 2026

SE-2, 16 APR 2026 to 14 MAY 2026