

25107

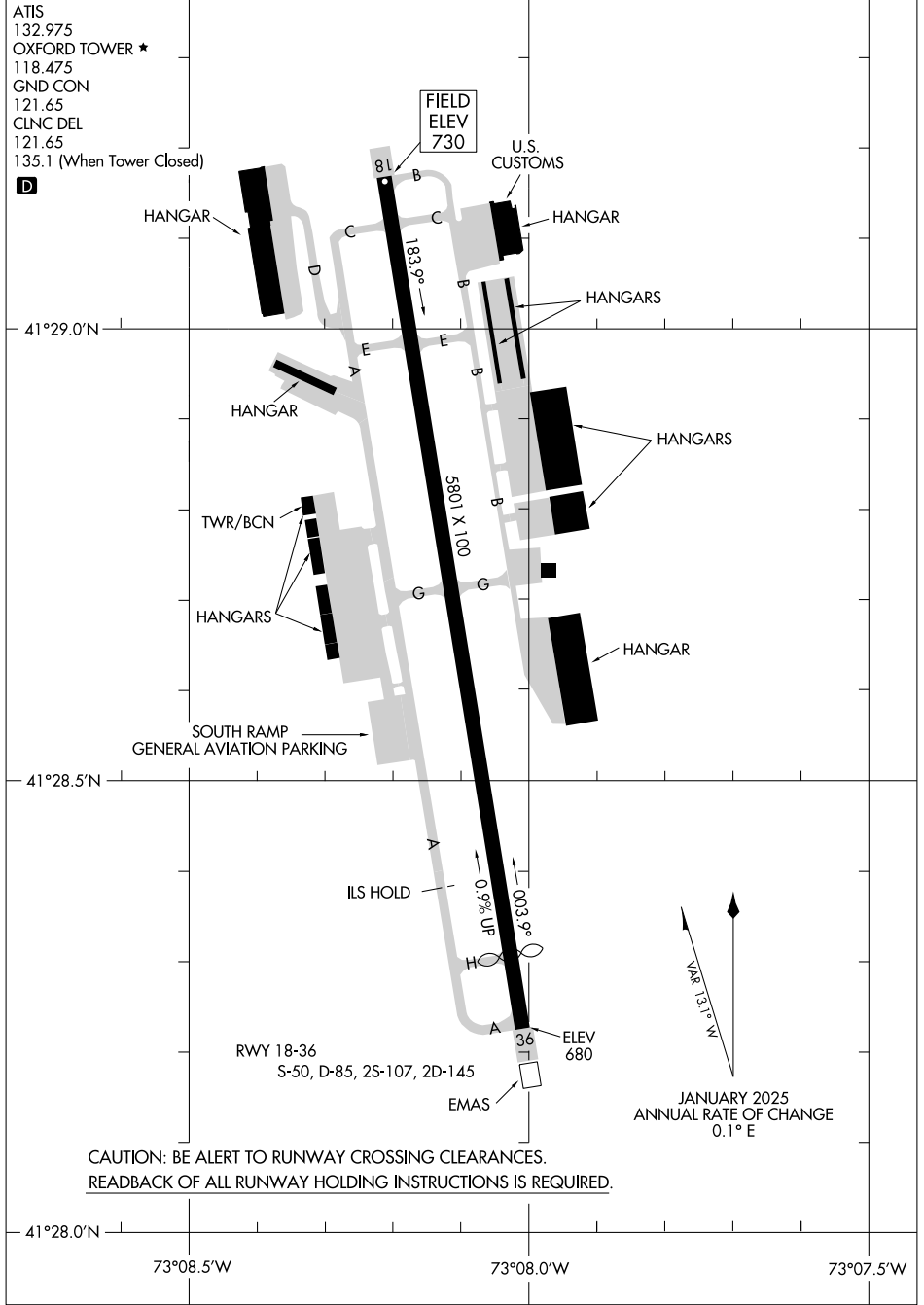
AIRPORT DIAGRAM

AL-5785 (FAA)

WATERBURY-OXFORD (OXC)
OXFORD, CONNECTICUT

ATIS
 132.975
 OXFORD TOWER ★
 118.475
 GND CON
 121.65
 CLNC DEL
 121.65
 135.1 (When Tower Closed)

D



CAUTION: BE ALERT TO RUNWAY CROSSING CLEARANCES.
 READBACK OF ALL RUNWAY HOLDING INSTRUCTIONS IS REQUIRED.

NE-1, 16 APR 2026 to 14 MAY 2026

NE-1, 16 APR 2026 to 14 MAY 2026

AIRPORT DIAGRAM

25107

OXFORD, CONNECTICUT
WATERBURY-OXFORD (OXC)