

WAAS CH 42901 W18A	APP CRS 185°	Rwy Ldg TDZE 730 Apt Elev 730	5801
--	------------------------	---	-------------

RNAV (GPS) RWY 18

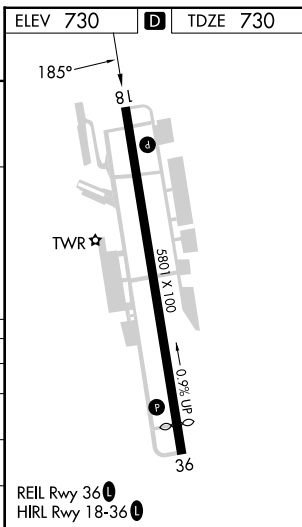
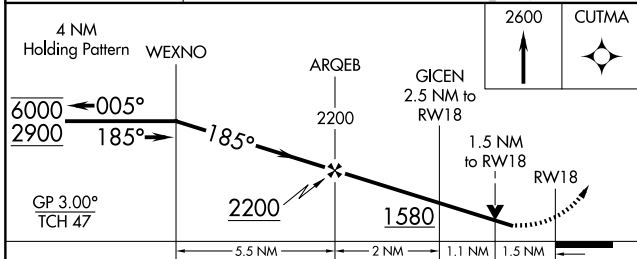
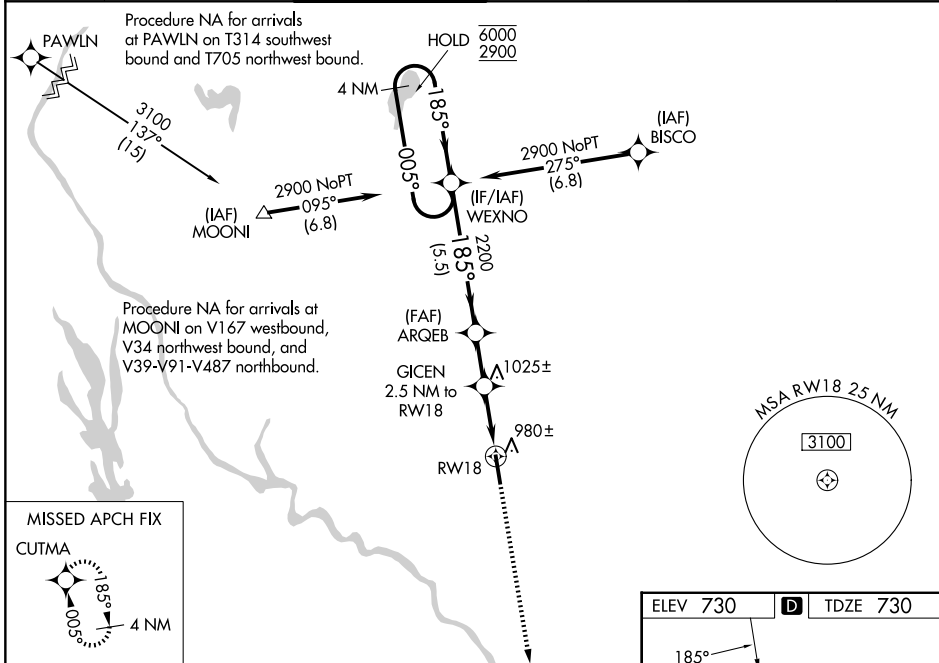
WATERBURY-OXFORD (OXC)

RNP APCH - GPS.

⚠ Rwy 18 helicopter visibility reduction below 3/4 SM NA. For uncompensated Baro-VNAV systems, LNAV/VNAV NA below -17°C or above 54°C. Baro-VNAV and VDP NA when using DXR altimeter setting. When local altimeter setting not received, use DXR altimeter setting: increase LPV DA to 1218 feet and all visibilities 1/4 SM; increase LNAV/VNAV DA to 1219 feet and all visibilities 1/4 SM; increase all MDAs 80 feet and LNAV visibility Cat C and D 3/8 SM, and Circling visibility Cat C and D 1/4 SM.

MISSED APPROACH:
Climb to 2600 direct CUTMA and hold.

ATIS 132.975	NEW YORK APP CON 124.075 343.65	OXFORD TOWER * 118.475 (CTAF) 0	GND CON 121.65	CLNC DEL 121.65	CLNC DEL 135.1 (When twr closed)	UNICOM 122.95
------------------------	---	--	--------------------------	---------------------------	---	-------------------------



CATEGORY	A	B	C	D
LPV DA	1140-1 1/8		410 (500-1 1/8)	
LNAV/VNAV DA	1141-1 1/8		411 (500-1 1/8)	
LNAV MDA	1240-1 510 (600-1)		1240-1 3/8 510 (600-1 3/8)	
CIRCLING	1360-1 630 (700-1)		1380-1 3/4 650 (700-1 3/4) 1460-2 1/4 730 (800-2 1/4)	

NE-1, 16 APR 2026 to 14 MAY 2026

NE-1, 16 APR 2026 to 14 MAY 2026