

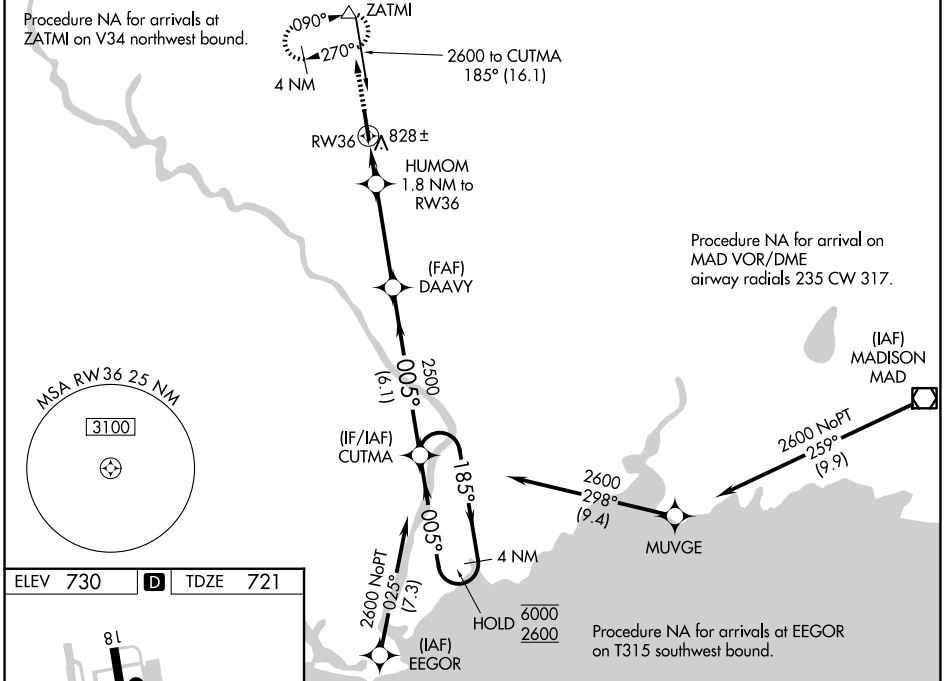
WAAS CH 72922 W36A	APP CRS 005°	Rwy Ldg 5301 TDZE 721 Apt Elev 730
--	------------------------	---

RNAV (GPS) RWY 36

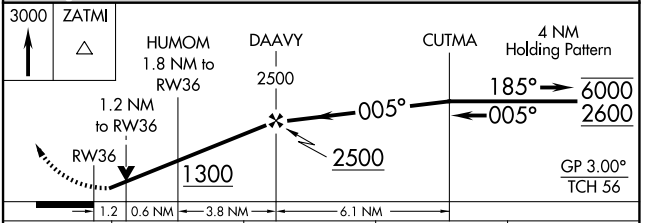
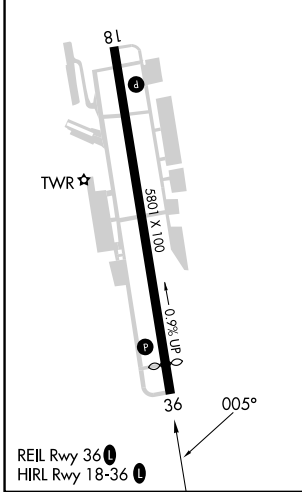
WATERBURY-OXFORD (OXC)

RNP APCH - GPS.	<p>⚠ Rwy 36 helicopter visibility reduction below 3/4 SM NA. For uncompensated Baro-VNAV systems, LNAV/VNAV NA below -17°C or above 54°C. Baro-VNAV and VDP NA when using DXR altimeter setting. When local altimeter setting not received, use DXR altimeter setting: increase LPV DA to 1049 feet and all visibilities 1/4 SM; increase LNAV/VNAV DA to 1175 feet and all visibilities 3/8 SM; increase all MDAs 80 feet and LNAV visibility Cats C and D 1/8 SM, and Circling visibility Cats C and D 1/4 SM.</p>	<p>MISSED APPROACH: Climb to 3000 direct ZATMI and hold, continue climb-in-hold to 3000.</p>
-----------------	---	---

ATIS 132.975	NEW YORK APP CON 124.075 343.65	OXFORD TOWER * 118.475 (CTAF) 0	GND CON 121.65	CLNC DEL 121.65	CLNC DEL 135.1 (When twr closed)	UNICOM 122.95
------------------------	---	---	--------------------------	---------------------------	---	-------------------------



ELEV 730	D	TDZE 721
----------	----------	----------



CATEGORY	A	B	C	D
LPV DA		971-3/4	250 (300-3/4)	
LNAV/VNAV DA		1097-1 376 (400-1)		
LNAV MDA	1120-1	399 (400-1)	1120-1 3/8	399 (400-1 1/8)
CIRCLING	1360-1	630 (700-1)	1380-1 3/4 650 (700-1 3/4)	1460-2 1/4 730 (800-2 1/4)

NE-1, 16 APR 2026 to 14 MAY 2026

NE-1, 16 APR 2026 to 14 MAY 2026