

APP CRS	Rwy Idg	5501
022°	TDZE	846
	Apt Elev	874

RNAV (GPS) RWY 2

MCMINN COUNTY (MMI)

RNP APCH - GPS.

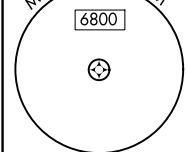
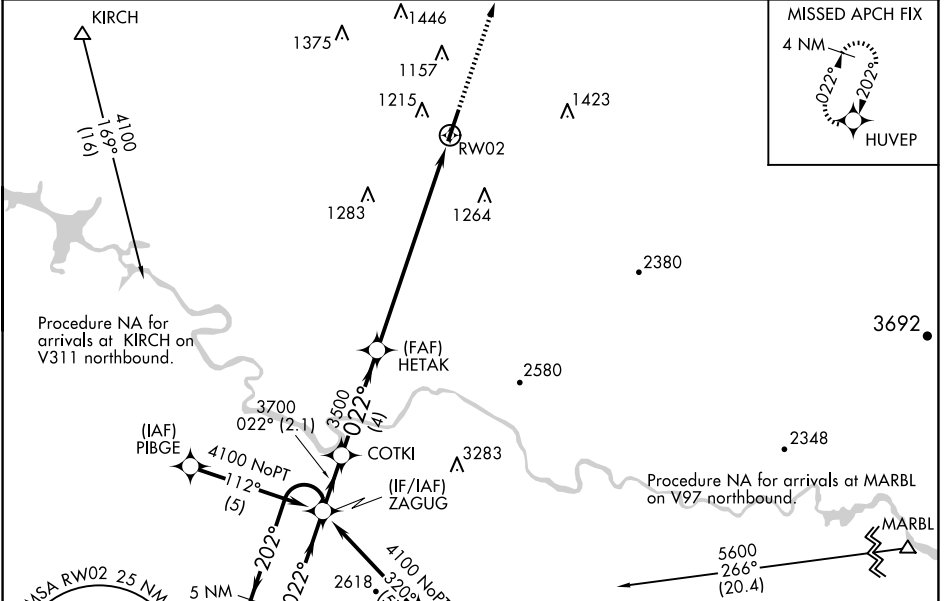
▼ **▲** Rwy 2 helicopter visibility reduction below 1 SM NA. Straight-in Rwy 2 NA at night. Circling Rwy 2 NA at night. When local altimeter setting not received, use Mc Ghee Tyson altimeter setting and increase all MDAs 120 feet, and LNAV visibility Cats C and D ½ SM, and Circling visibility Cat A ¼ SM and Cat C ½ SM.

MISSED APPROACH:
Climb to 3100 direct HUVEP and hold.

AWOS-3
125.425

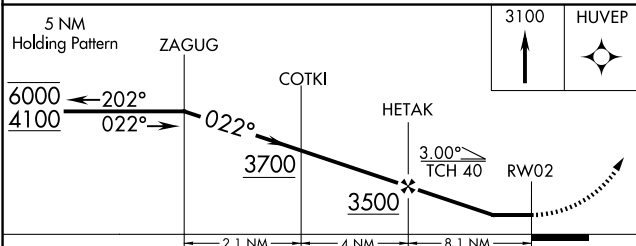
KNOXVILLE APP CON
123.9 353.6

UNICOM
122.8 (CTAF)

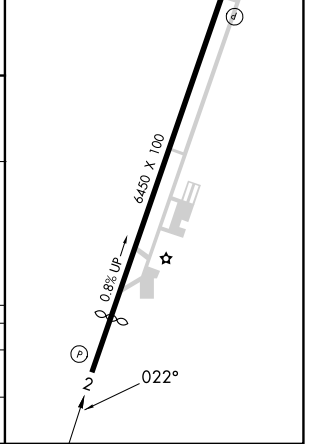


ELEV 874	TDZE 846
----------	----------

REIL Rwy 2 and 20
MIRL Rwy 2-20



CATEGORY	A	B	C	D
LNAV MDA	1600-1 754 (800-1)	1600-1¼ 754 (800-1¼)	1600-2	754 (800-2)
CIRCLING	1600-1 726 (800-1)	1600-1¼ 726 (800-1¼)	1600-2 726 (800-2)	1820-3 946 (1000-3)



SE-1, 16 APR 2026 to 14 MAY 2026

SE-1, 16 APR 2026 to 14 MAY 2026