

APP CRS <b>138°</b>	Rwy Idg TDZE Apt Elev	<b>N/A</b> <b>N/A</b> <b>860</b>
------------------------	-----------------------------	--

# RNAV (GPS)-A

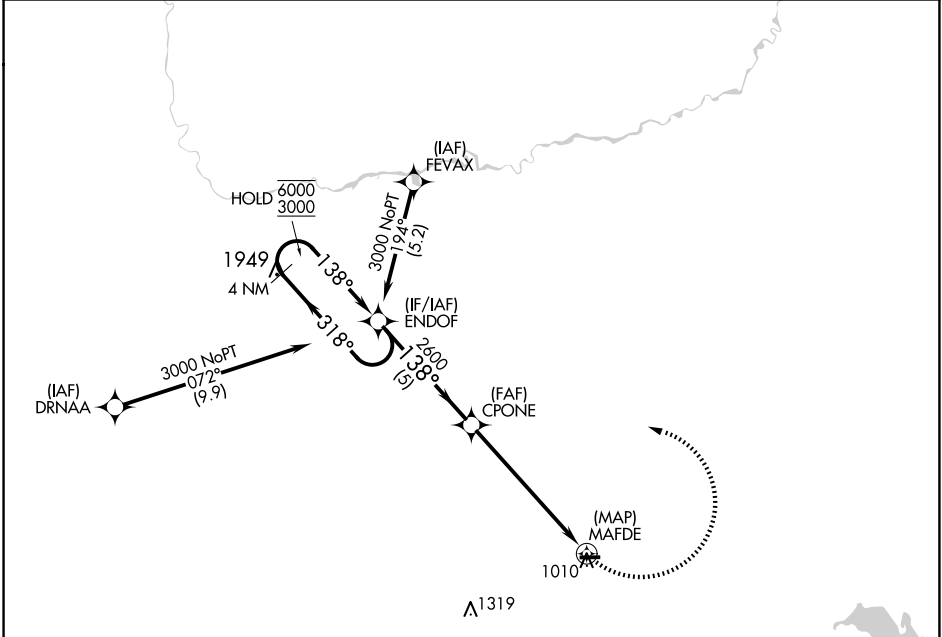
NAPPANEE MUNI (C03)

RNP APCH - GPS.

**V** Rwy 9, 27 helicopter visibility reduction below 1 SM NA.  
**Δ** NA Procedure NA at night. Use SBN altimeter setting.

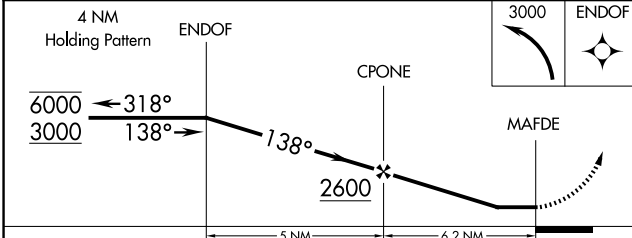
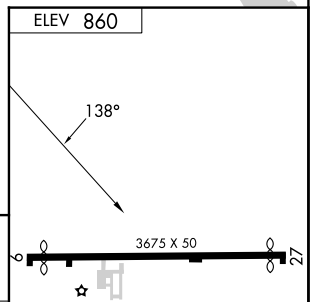
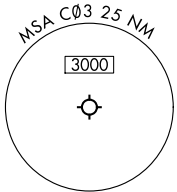
MISSED APPROACH: Climbing left turn to 3000 direct ENDOP and hold.

SBN ASOS <b>120.675</b>	SOUTH BEND APP CON ★ <b>132.05 257.8</b>	UNICOM <b>123.0 (CTAF) 0</b>
----------------------------	---	---------------------------------



EC-2, 16 APR 2026 to 14 MAY 2026

EC-2, 16 APR 2026 to 14 MAY 2026



CATEGORY	A	B	C	D
CIRCLING	1420-1	560 (600-1)	NA	

MIRL Rwy 9-27 0