

LOC I-BPM 111.9	APP CRS 133°	Rwy Ldg TDZE Apt Elev	7000 1031 1031
---------------------------	------------------------	-----------------------------	---


ILS or LOC RWY 13

ST CLOUD SKY CENTRAL (STC)

DME required.

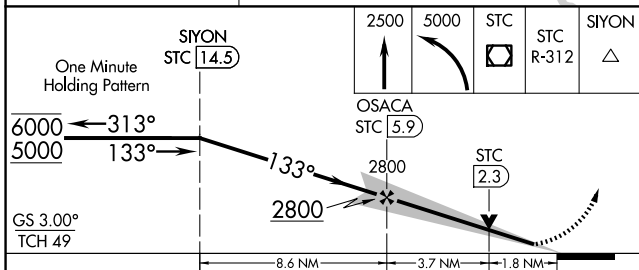
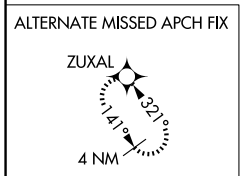
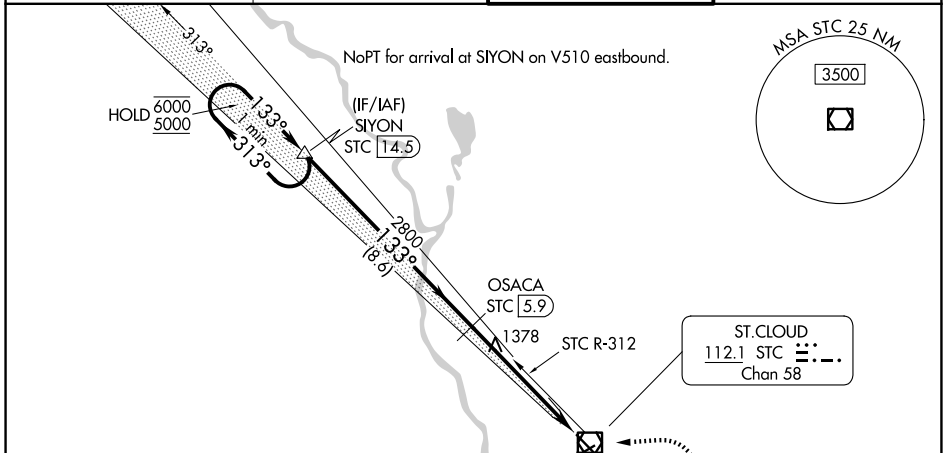
⚠ For inop ALS when using Little Falls altimeter setting, increase S-ILS-13 all Cats visibility to ¾ SM. When local altimeter setting not received, use Little Falls altimeter setting, increase DA to 1307 feet; increase all MDAs 80 feet and S-LOC 13 visibility Cats C and D ¼ SM, and Circling visibility Cats C and D ¼ SM. For inop ALS, increase S-LOC 13 Cats C and D visibility to 1¾ SM. DME from STC VOR/DME. DME use requires simultaneous reception of I-BPM and STC DME. VDP NA when using Little Falls altimeter setting.

MALSRL

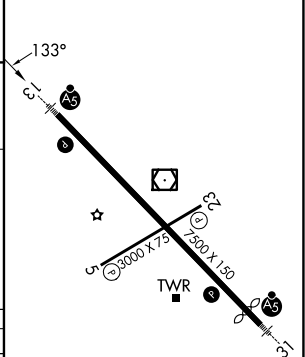


MISSED APPROACH: Climb to 2500 then climbing left turn to 5000 direct STC VOR/DME and on STC VOR/DME R-312 to SIYON/STC 14.5 DME and hold.

ATIS 119.375	MINNEAPOLIS CENTER 121.05 235.775	ST. CLOUD TOWER ★ 118.25 (CTAF) 0	GND CON 123.75
------------------------	---	---	--------------------------



ELEV 1031	D	TDZE 1031
-----------	---	-----------



CATEGORY	A	B	C	D
S-ILS 13	1231-½		200 (200-½)	
S-LOC 13	1640-½ 609 (700-½)		1640-1¾ 609 (700-1¾)	
CIRCLING	1640-1 609 (700-1)		1640-1¾ 609 (700-1¾) 1860-2¾ 829 (900-2¾)	

MIRL Rwy 5-23 0	
HIRL Rwy 13-31 0	
FAF to MAP 5.4 NM	
Knots	60 90 120 150 180
Min:Sec	5:24 3:36 2:42 2:10 1:48

NC-1, 16 APR 2026 to 14 MAY 2026

NC-1, 16 APR 2026 to 14 MAY 2026