

APP CRS 236°	Rwy Ldg TDZE Apt Elev	3000 1022 1031
------------------------	-----------------------------	---

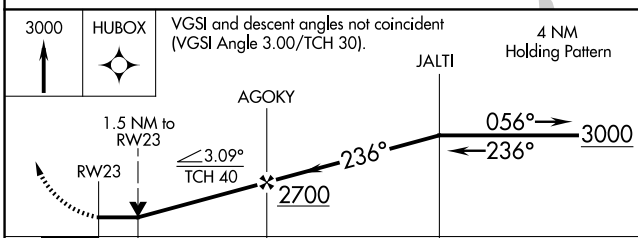
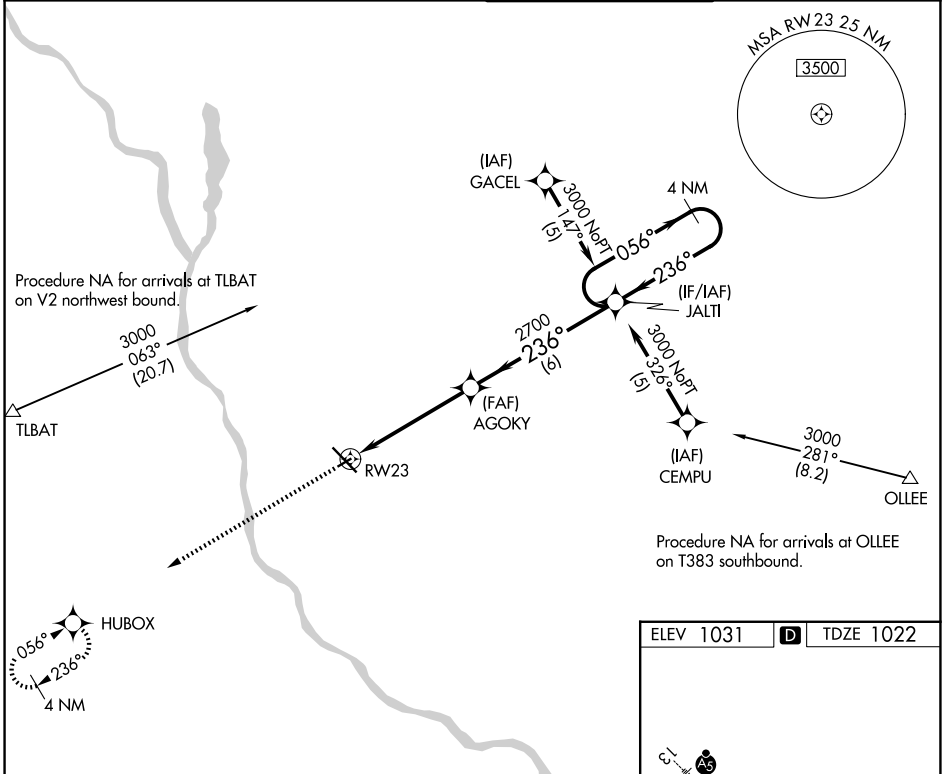
RNAV (GPS) RWY 23

ST CLOUD SKY CENTRAL (STC)

⚠ Rwy 23 helicopter visibility reduction below 3/4 SM NA. DME/DME RNP-0.3 NA. VDP NA when using Little Falls altimeter setting. When local altimeter setting not received, use Little Falls altimeter setting and increase all MDA 80 feet and increase LNAV Cat C visibility 3/8 SM and Circling Cat C visibility 1/4 SM.

MISSED APPROACH: Climb to 3000 direct HUBOX and hold.

ATIS 119.375	MINNEAPOLIS CENTER 121.05 235.775	ST. CLOUD TOWER ★ 118.25 (CTAF) 0	GND CON 123.75
------------------------	---	---	--------------------------



ELEV 1031	D	TDZE 1022
-----------	----------	-----------

Obstacle chart showing:

- MRL Rwy 5-23:** 0
- HIRL Rwy 13-31:** 0
- TWR:** 3000 X 75, 3000 X 150.

CATEGORY	A	B	C	D
LNAV MDA	1540-1	518 (600-1)	1540-1 3/8 518 (600-1 3/8)	NA
CIRCLING	1540-1	509 (600-1)	1620-1 1/2 589 (600-1 1/2)	NA

NC-1, 16 APR 2026 to 14 MAY 2026

NC-1, 16 APR 2026 to 14 MAY 2026