


WAAS CH 61213 W31A	APP CRS 313°	Rwy Ldg TDZE Apt Elev	7000 1020 1031
--	------------------------	-----------------------------	---

RNAV (GPS) RWY 31

ST CLOUD SKY CENTRAL (STC)

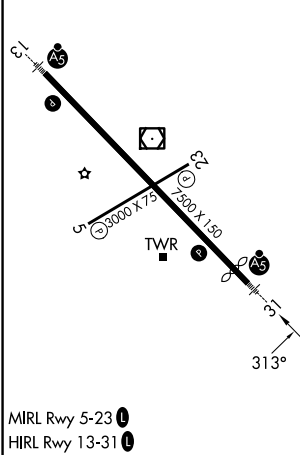
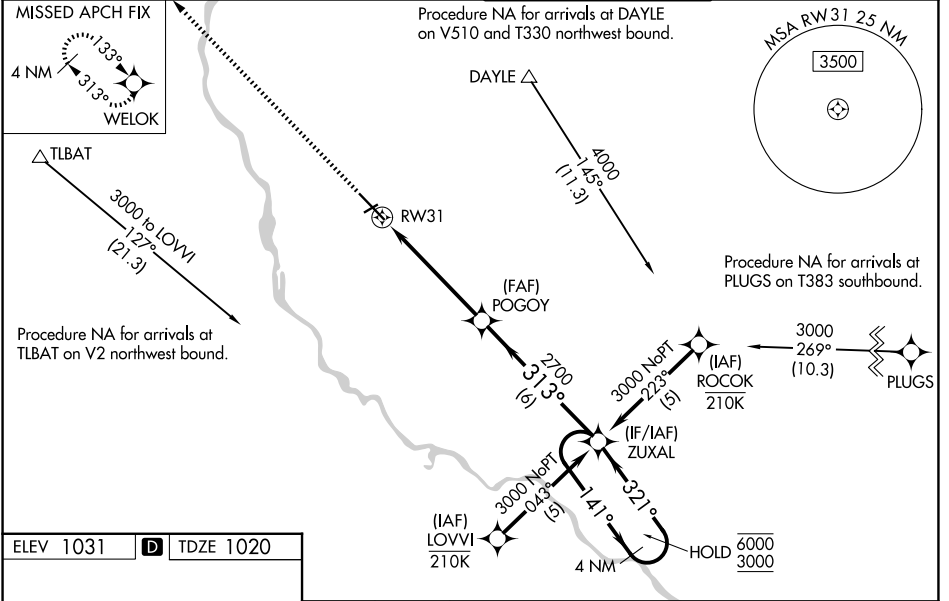
RNP APCH - GPS.

⚠ Baro-VNAV and VDP NA when using Little Falls altimeter setting. For uncompensated Baro-VNAV systems, LNAV/VNAV NA below -21°C or above 54°C. For inop ALS when using Little Falls altimeter setting, increase LPV all Cats visibility to ¾ SM and LNAV/VNAV all Cats visibility to 1 ½ SM and LNAV Cats C and D visibility to 1 ¾ SM. When local altimeter setting not received, use Little Falls altimeter setting, increase LPV DA to 1296 feet, increase LNAV/VNAV DA to 1503 feet and all visibilities ¼ SM; increase all MDAs 80 feet and LNAV visibility Cat C and D ¼ SM, and Circling visibility Cat C and D ¼ SM. For inop ALS, increase LNAV/VNAV visibility all Cats to 1 ½ SM.

MALSRS 

MISSED APPROACH: Climb to 3000 direct WELOK and hold.

ATIS 119.375	MINNEAPOLIS CENTER 121.05 235.775	ST. CLOUD TOWER ★ 118.25 (CTAF) 0	GND CON 123.75
------------------------	---	---	--------------------------



CATEGORY	A	B	C	D
LPV DA		1220-½	200 (200-½)	
LNAV/VNAV DA		1427-¾	407 (400-¾)	
LNAV MDA	1460-½	440 (500-½)	1460-¾	440 (500-¾)
CIRCLING	1500-1	469 (500-1)	1620-1½	1860-2¾
			589 (600-1½)	829 (900-2¾)

NC-1, 16 APR 2026 to 14 MAY 2026

NC-1, 16 APR 2026 to 14 MAY 2026