

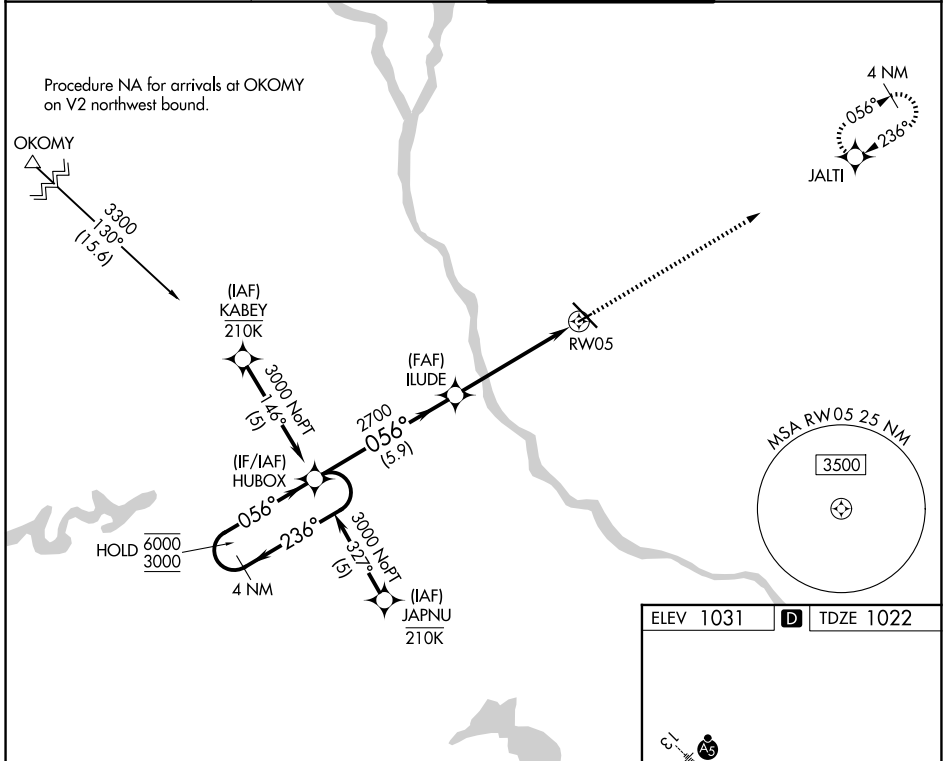
APP CRS	Rwy Ldg	3000
056°	TDZE	1022
	Apt Elev	1031

RNAV (GPS) RWY 5

ST CLOUD SKY CENTRAL (STC)

RNP APCH - GPS.	<p>⚠ Rwy 5 helicopter visibility reduction below 3/4 SM NA. When local altimeter setting not received, use Little Falls altimeter setting, increase all MDAs 80 feet and LNAV visibility Cat C 1/4 SM. VDP NA when using Little Falls altimeter setting.</p>	<p>MISSED APPROACH: Climb to 3000 direct JALTI and hold.</p>

ATIS 119.375	MINNEAPOLIS CENTER 121.05 235.775	ST. CLOUD TOWER * 118.25 (CTAF) 0	GND CON 123.75
------------------------	---------------------------------------------	---------------------------------------------	--------------------------



NC-1, 16 APR 2026 to 14 MAY 2026

NC-1, 16 APR 2026 to 14 MAY 2026

ELEV 1031		D TDZE 1022	
<p>4 NM Holding Pattern</p> <p>6000 ← 236°</p> <p>3000 → 056°</p>		<p>VGSI and descent angles not coincident (VGSI Angle 3.00/TCH 31).</p> <p>3000 JALTI</p>	
<p>HUBOX</p> <p>ILUDE</p> <p>2700</p> <p>3.00° TCH 40</p>		<p>1.4 NM to RWY05</p> <p>RWY05</p>	
5.9 NM		3.8 NM	
		1.4 NM	
CATEGORY	A	B	C
LNAV MDA	1500-1	478 (500-1)	1500-1 3/8 478 (500-1 3/8)
CIRCLING	1500-1	469 (500-1)	1620-1 1/2 589 (600-1 1/2)
			D
			NA

MIRL Rwy 5-23 0
HIRL Rwy 13-31 0