

APP CRS	Rwy Idg	<b>4006</b>
<b>229°</b>	TDZE	<b>488</b>
	Apt Elev	<b>492</b>

# RNAV (GPS) RWY 23

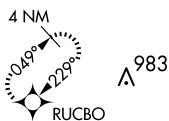
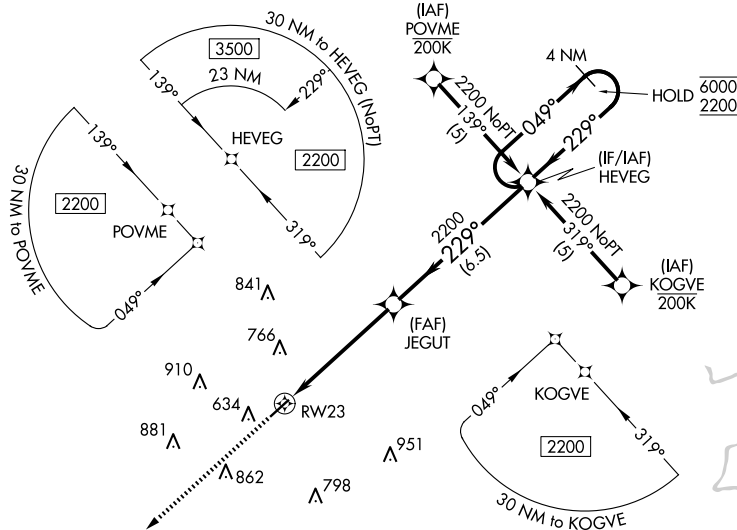
BROOKHAVEN-LINCOLN COUNTY (1R7)

RNP APCH - GPS.		MISSED APPROACH: Climb to 2000 direct RUCBO and hold.
Procedure NA at night. Rwy 23 helicopter visibility reduction below 1 SM NA. When local altimeter setting not received, use McComb altimeter setting and increase all MDAs 80 feet; increase LNAV Cat C and Circling Cat C visibility ¼ SM.		

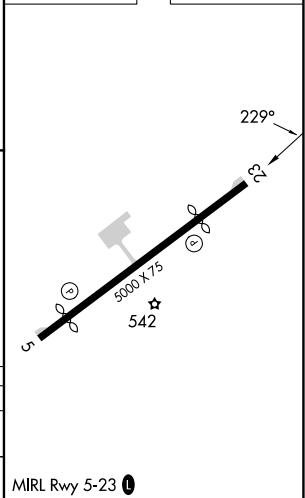
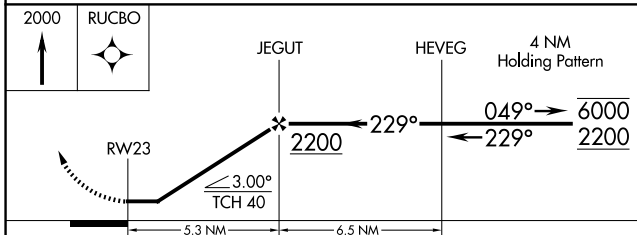
AWOS-3T <b>118.125</b>	HOUSTON CENTER <b>126.8 327.8</b>	UNICOM <b>122.8 (CTAF) 0</b>
---------------------------	--------------------------------------	---------------------------------

SC-4, 16 APR 2026 to 14 MAY 2026

SC-4, 16 APR 2026 to 14 MAY 2026



ELEV 492	TDZE 488
----------	----------



CATEGORY	A	B	C	D
LNAV MDA	900-1	412 (500-1)	900-1½ 412 (500-1½)	NA
CIRCLING	940-1 448 (500-1)	1080-1 588 (600-1)	1220-2 728 (800-2)	NA

MIRL Rwy 5-23 0