

WAAS CH 49017 W03A	APP CRS 029°	Rwy Idg 4400 TDZE 410 Apt Elev 416
--	------------------------	---

RNAV (GPS) RWY 3

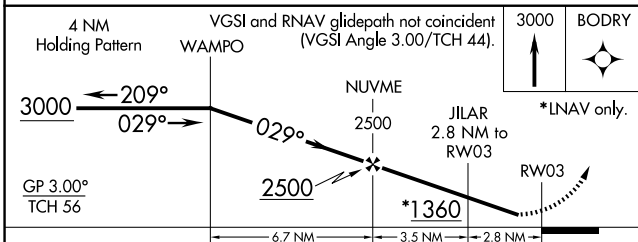
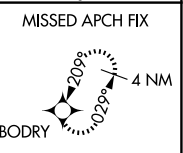
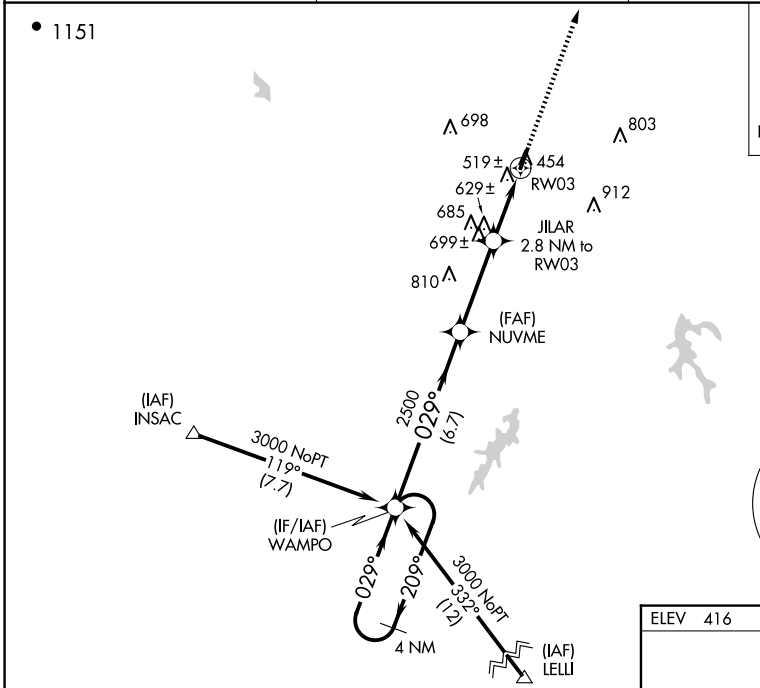
FARMVILLE RGNL (FVX)

RNP APCH-GPS.

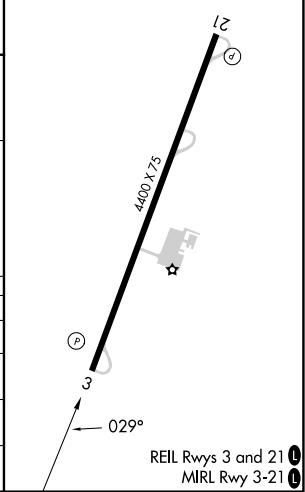
⚠ Baro-VNAV NA when using Lynchburg Rgnl/Preston Glenn Fld altimeter setting. For uncompensated Baro-VNAV systems, LNAV/VNAV NA below -15°C or above 54°C. Straight-in/Circling Rwy 3 procedure NA at night. When local altimeter setting not received, use Lynchburg Rgnl/Preston Glenn Fld altimeter setting and increase LPV DA to 878 feet and all visibilities $\frac{3}{8}$ SM. Increase LNAV/VNAV DA to 970 feet and all visibilities $\frac{1}{2}$ SM. Increase all MDAs 160 feet and LNAV visibility Cat C $\frac{1}{4}$ SM, and Circling visibility Cat C $\frac{1}{2}$ SM. Rwy 3 helicopter visibility reduction below 1 SM NA.

MISSED APPROACH:
Climb to 3000 direct
BODRY and hold.

AWOS-3 132.725	ROANOKE APP CON 135.0 254.325	UNICOM 122.8 (CTAF) 0
--------------------------	---	---------------------------------



ELEV 416	TDZE 410
----------	----------



CATEGORY	A	B	C	D
LPV DA	720-1	310	400-1	NA
LNAV/VNAV DA	812-1 $\frac{1}{8}$	402	400-1 $\frac{1}{8}$	NA
LNAV MDA	880-1	470 (500-1)	880-1 $\frac{1}{8}$ 470 (500-1 $\frac{1}{8}$)	NA
CIRCLING	900-1	484 (500-1)	1000-1 $\frac{1}{2}$ 584 (600-1 $\frac{1}{2}$)	NA

NE-3, 16 APR 2026 to 14 MAY 2026

NE-3, 16 APR 2026 to 14 MAY 2026