

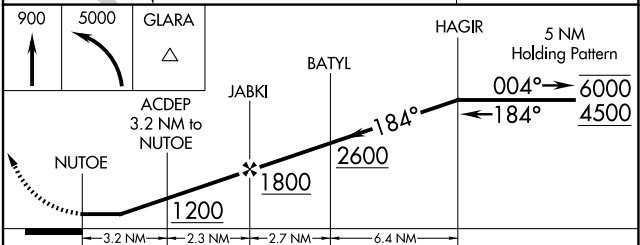
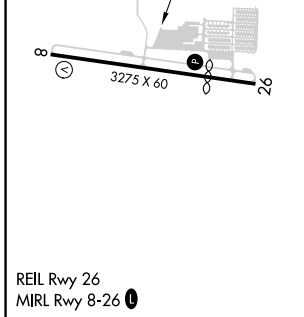
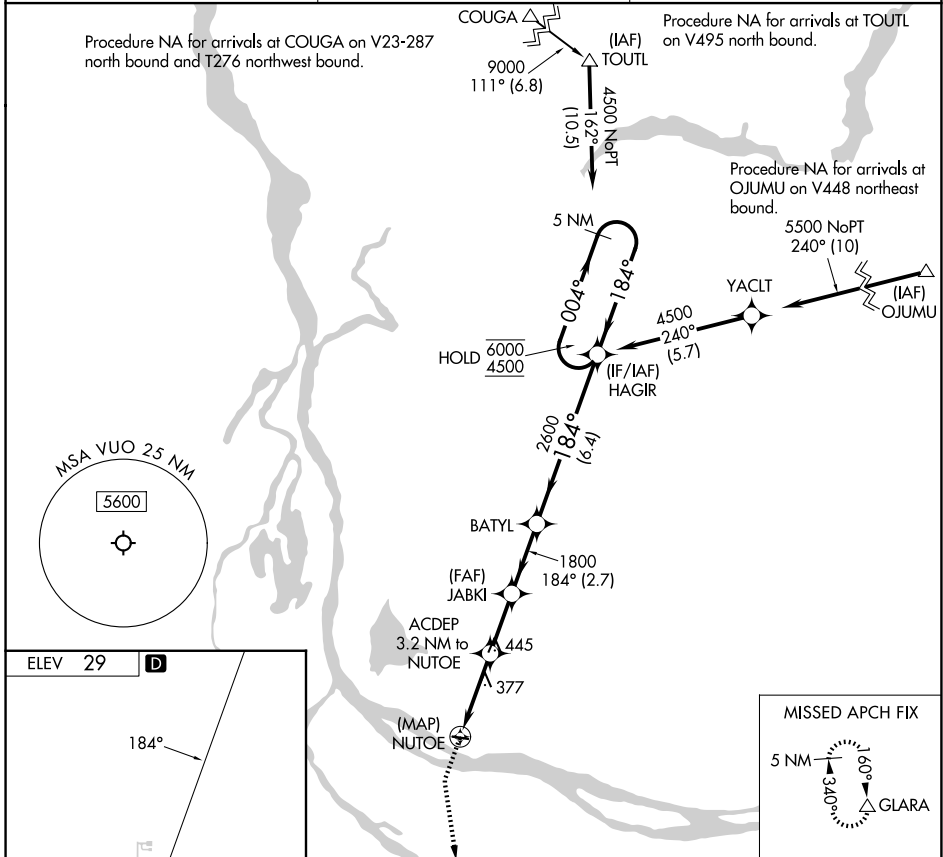
APP CRS	Rwy Ldg	N/A
<b>184°</b>	TDZE	N/A
	Apt Elev	<b>29</b>

# RNAV (GPS)-B

PEARSON FLD (VUO)

RNP APCH - GPS.	MISSED APPROACH: Climb to 900 then climbing left turn to 5000 direct GLARA and hold, continue climb-in-hold to 5000.
<b>⚠</b> When local altimeter setting not received, use Portland Intl altimeter setting.	

ASOS <b>135.125</b>	PORTLAND APP CON <b>124.35 360.8</b>	CLNC DEL <b>119.0 (CTAF) 0</b>
------------------------	-----------------------------------------	-----------------------------------



CATEGORY	A	B	C	D
CIRCLING	720-1 691 (700-1)	740-1 711 (800-1)	NA	

NW-1, 16 APR 2026 to 14 MAY 2026

NW-1, 16 APR 2026 to 14 MAY 2026