

| | | |
|--|------------------------|--|
| WAAS CH 99509 W27A | APP CRS 272° | Rwy Idg TDZE 5000 525 Apt Elev 530 |
|--|------------------------|--|

RNAV (GPS) RWY 27

PEKIN MUNI (C15)

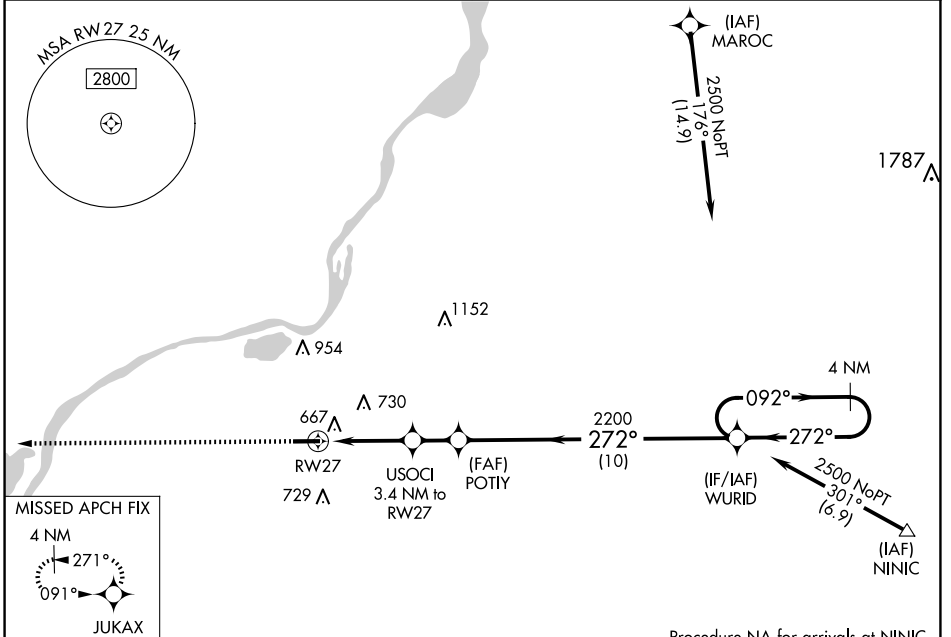
RNP APCH-GPS

Baro-VNAV NA. Rwy 27 helicopter visibility reduction below 1 SM NA. Use General Downning - Peoria Intl altimeter setting: when not received use Lincoln altimeter setting; increase LPV DA to 889 feet; increase LNAV/VNAV DA to 1035 feet; increase all MDAs 40 feet and LNAV visibility Cat C/D 1/8 SM and Circling visibility Cat C 1/4 SM.

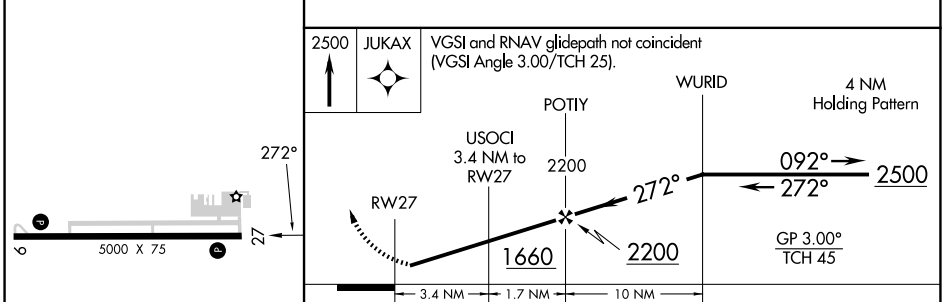
MISSED APPROACH: Climb to 2500 direct JUKAX and hold.

SAINT LOUIS APP CON **125.8 269.2**

UNICOM **122.8 (CTAF) 0**



| | |
|-----------------|-----------------|
| ELEV 530 | TDZE 525 |
|-----------------|-----------------|



| CATEGORY | A | B | C | D |
|--------------|------------|-------------|-------------------------------|-------------------------------|
| LPV DA | 864-1 | | 339 (400-1) | |
| LNAV/VNAV DA | 1010-1 3/8 | | 485 (500-1 3/8) | |
| LNAV MDA | 1020-1 | 495 (500-1) | 1020-1 3/8 | 495 (500-1 3/8) |
| CIRCLING | 1060-1 | 530 (600-1) | 1100-1 1/2 570 (600-1 1/2) | 1360-2 3/4 830 (900-2 3/4) |

REIL Rwy 9 and 27 0
MIRL Rwy 9-27 0

EC-3, 16 APR 2026 to 14 MAY 2026

EC-3, 16 APR 2026 to 14 MAY 2026