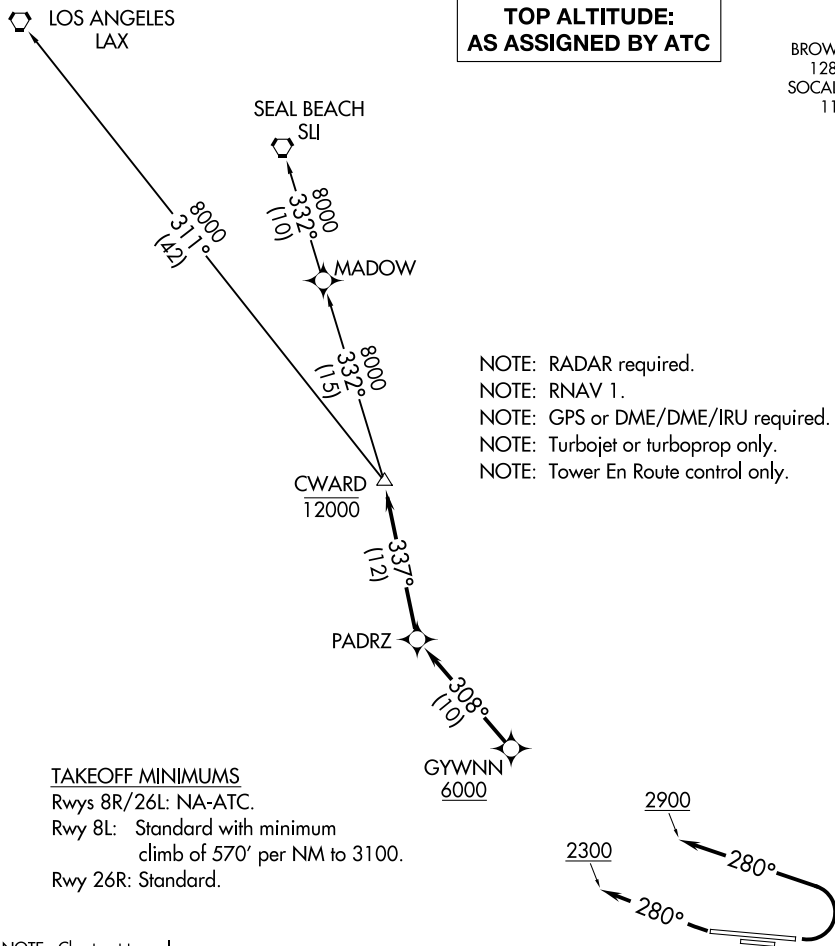


**TOP ALTITUDE:
AS ASSIGNED BY ATC**

ATIS
132.35
BROWN TOWER*
128.25 225.4
SOCAL DEP CON
119.6 363.1



TAKEOFF MINIMUMS

Rwys 8R/26L: NA-ATC.

Rwy 8L: Standard with minimum climb of 570' per NM to 3100.

Rwy 26R: Standard.

NOTE: Chart not to scale.

DEPARTURE ROUTE DESCRIPTION

TAKEOFF RUNWAY 8L: Climbing left turn heading 280° to 2900, expect vectors to cross GYWNN at or above 6000, then on track 308° to PADRZ, then on track 337° to cross CWARD at or below 12000, thence. . . .

TAKEOFF RUNWAY 26R: Climbing right turn heading 280° to 2300, expect vectors to cross GYWNN at or above 6000, then on track 308° to PADRZ, then on track 337° to cross CWARD at or below 12000, thence. . . .

. . . .on transition. Maintain ATC assigned altitude. Expect filed altitude 10 minutes after departure.

LOS ANGELES TRANSITION (CWARD2.LAX)

SEAL BEACH TRANSITION (CWARD2.SLI)