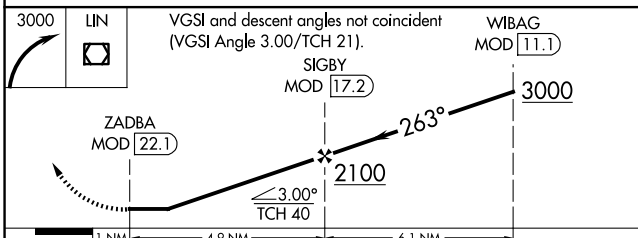
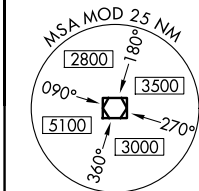
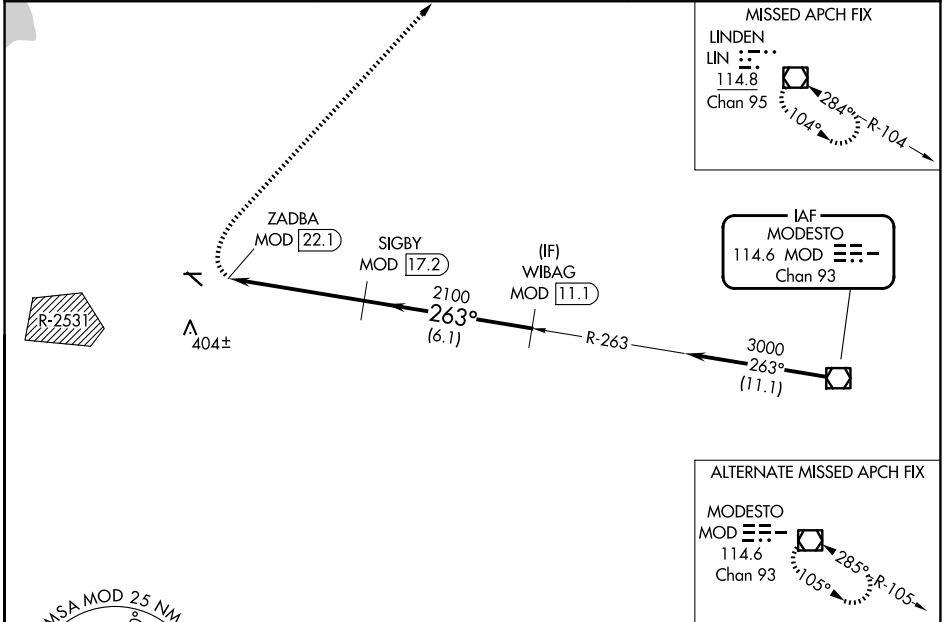


VOR/DME MOD 114.6 Chan 93	APP CRS 263°	Rwy Ldg TDZE 186 Apt Elev 193	3438
---	------------------------	---	-------------

VOR RWY 26

TRACY MUNI (TCY)

DME required.		MISSED APPROACH: Climbing right turn to 3000 direct LIN VOR/DME and hold.
AWOS-3 118.375	NORCAL APP CON 123.85 278.3	UNICOM 123.075 (CTAF) 0



ELEV 193	TDZE 186
----------	----------

MIRL Rwy 8-26 and 12-30
REIL Rwy 8, 12, 26 and 30

SW-2, 16 APR 2026 to 14 MAY 2026

SW-2, 16 APR 2026 to 14 MAY 2026