

WAAS CH 56611 W23A	APP CRS 233°	Rwy Ldg 4699 TDZE 431 Apt Elev 434
---------------------------------	------------------------	---------------------------------------------------------------

RNAV (GPS) RWY 23

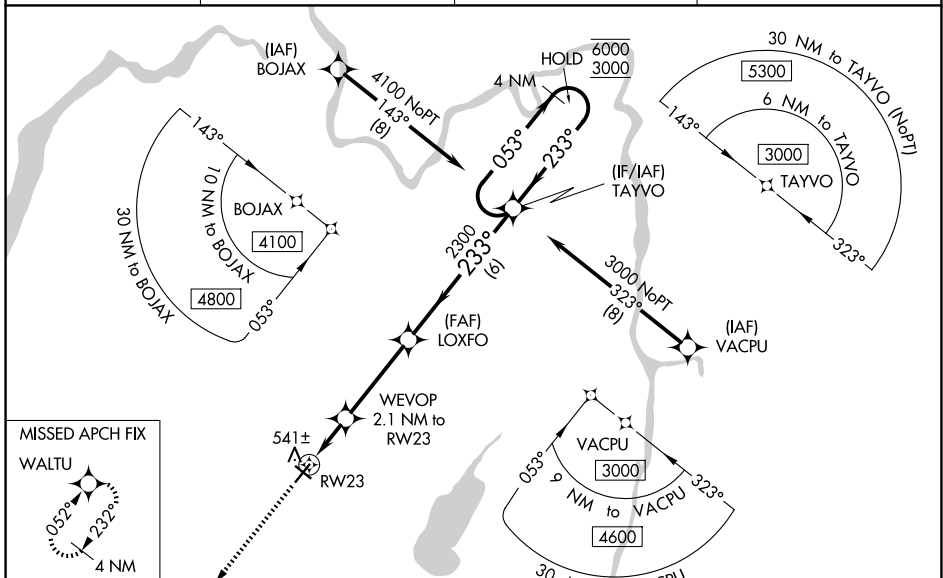
SARATOGA COUNTY (5B2)

RNP APCH.

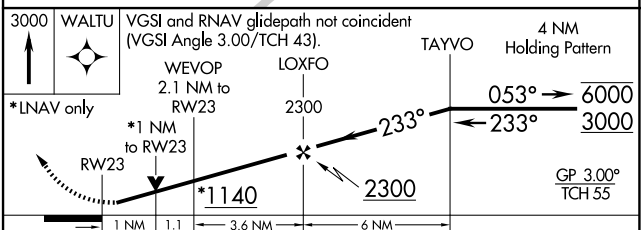
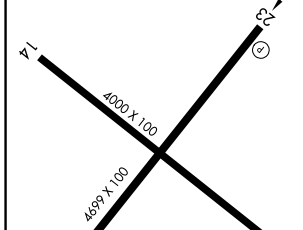
▼ Baro-VNAV and VDP NA when using Albany altimeter setting. Rwy 23 helicopter visibility reduction below $\frac{3}{4}$ SM NA. For uncompensated Baro-VNAV systems, LNAV/VNAV NA below -15°C or above 54°C. Circling NA at night. When local altimeter setting not received, use Albany altimeter setting and increase all DAs 63 feet and MDAs 80 feet. Increase LPV and LNAV/VNAV all Cats visibility $\frac{1}{8}$ SM, LNAV Cats C/D visibility $\frac{3}{8}$ SM, and Circling Cat C visibility $\frac{1}{4}$ SM.

MISSED APPROACH: Climb to 3000 direct WALTU and hold.

AWOS-3 132.025	ALBANY APP CON 118.05 263.075	GCO 118.125	UNICOM 123.075 (CTAF) 0
--------------------------	-----------------------------------------	-----------------------	-----------------------------------



ELEV 434	TDZE 431
-----------------	-----------------



CATEGORY	A	B	C	D
LPV DA		698- $\frac{7}{8}$	267 (300- $\frac{7}{8}$)	
LNAV/VNAV DA		706- $\frac{7}{8}$	275 (300- $\frac{7}{8}$)	
LNAV MDA		800-1	369 (400-1)	
CIRCLING	980-1 546 (600-1)	1080-1 646 (700-1)	1140-2 706 (800-2)	1340-3 906 (1000-3)

MIRL Rwy 5-23 **0**
 MIRL Rwy 14-32 **0**
 REIL Rws 5 and 23 **0**

NE-2, 16 APR 2026 to 14 MAY 2026

NE-2, 16 APR 2026 to 14 MAY 2026