

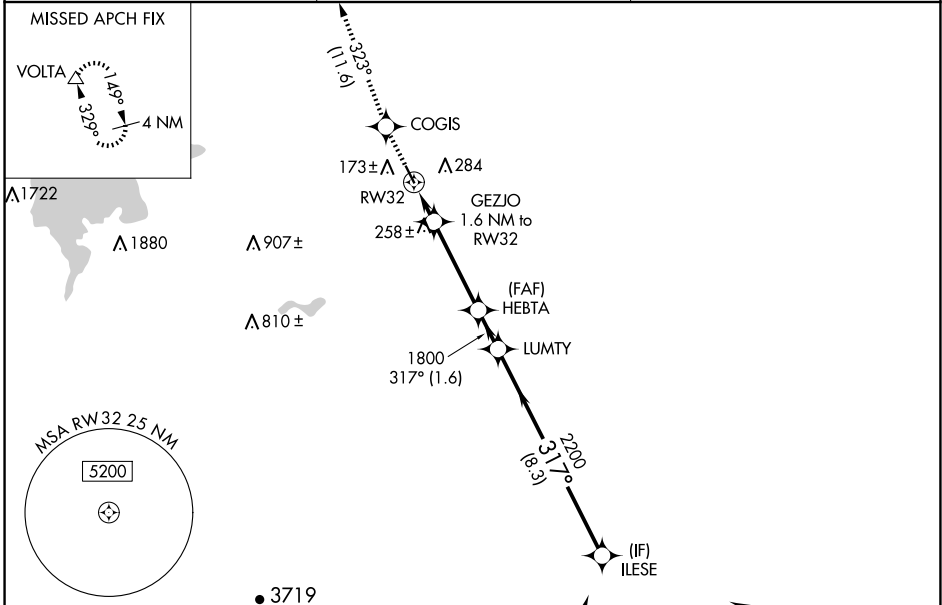
APP CRS 317°	Rwy Idg 3801
	TDZE 121
	Apt Elev 121

RNAV (GPS) RWY 32

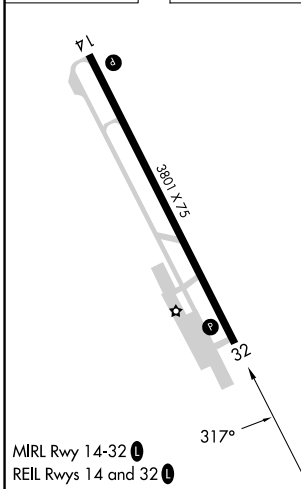
LOS BANOS MUNI (LSN)

RNP APCH.	<p>▼ Rwy 32 helicopter visibility reduction below 3/4 SM NA. VDP NA when using Merced Yosemite Rgnl altimeter setting. When local altimeter setting not received, use Merced Yosemite Rgnl altimeter setting and increase all MDA 60 feet, and all visibility 1/4 SM.</p> <p>▲ NA</p>	<p>MISSED APPROACH: Climb to 3000 direct COGIS and on track 323° to VOLTA and hold.</p>
-----------	---	---

AWOS-3 118.675	NORCAL APP CON 120.95 269.45	UNICOM 122.8 (CTAF) 0
--------------------------	--	---------------------------------



ELEV 121	TDZE 121
----------	----------



3000	COGIS	fr 323°	VOLTA	ILESE
	GEZJO	HEBTA	LUMTY	ILESE
	1.6 NM to RWY 32			
	RWY 32	RWY 32	1800	2200
	1.1 NM	0.5 NM	3.00° TCH 38	317°
	680			3600
	1.1 NM	0.5 NM	3.6 NM	1.6 NM
CATEGORY	A	B	C	D
LNAV MDA	520-1	399 (400-1)	520-1 1/8	399 (400-1 1/8)