

WAAS CH 69538 W01A	APP CRS 011°	Rwy Ldg TDZE Apt Elev	4802 358 358
---------------------------------	------------------------	-----------------------------	---

RNAV (GPS) RWY 1

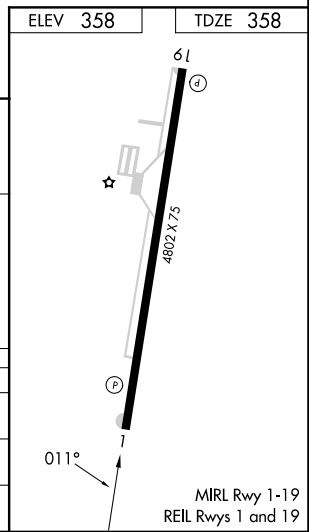
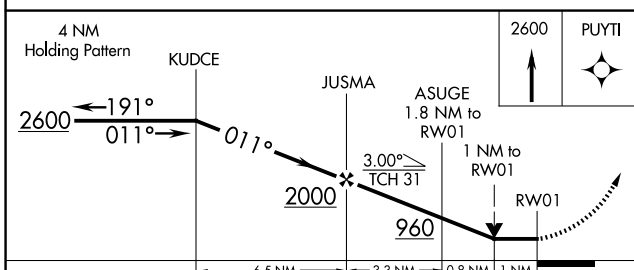
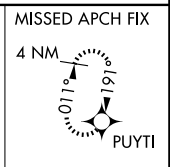
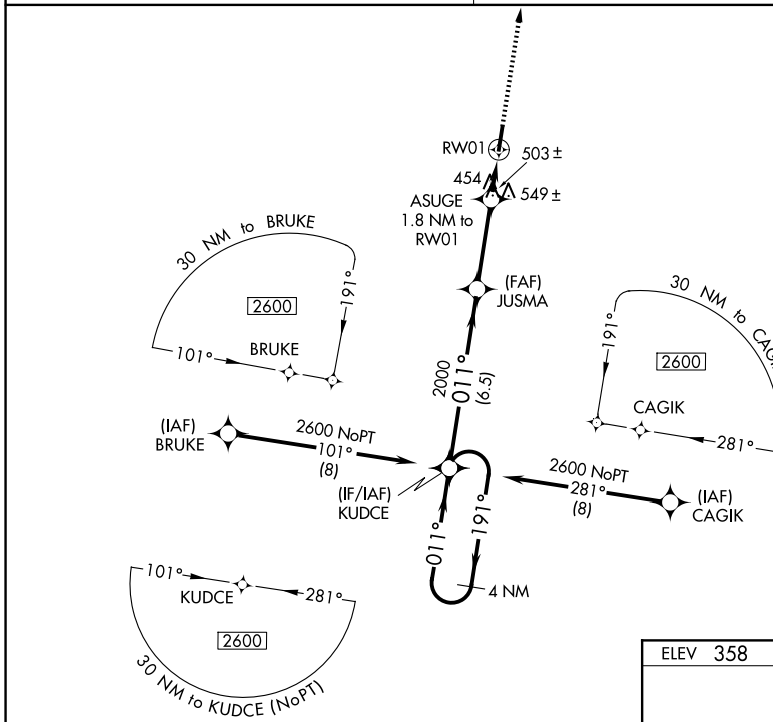
GIBSON COUNTY (TGC)

▼ NA Night landing: Rwy 19 NA. DME/DME RNP-0.3 NA. Helicopter visibility reduction below 3/4 SM NA. Obtain local altimeter setting on CTAF; when not received use Jackson Rgnl altimeter setting and increase all MDA 60 feet, increase Circling Cat C visibility 1/4 mile.

MISSED APPROACH: Climb to 2600 direct PUYTI and hold.

MEMPHIS CENTER
134.65 316.15

UNICOM
122.8 (CTAF)



CATEGORY	A	B	C	D
LP MDA	720-1 362 (400-1)			
LNVA MDA	800-1 442 (500-1)		800-1 3/8 442 (500-1 3/8)	
CIRCLING	980-1 622 (700-1)		980-1 3/4 1780-3 1422 (1500-3)	

SE-1, 16 APR 2026 to 14 MAY 2026

SE-1, 16 APR 2026 to 14 MAY 2026