

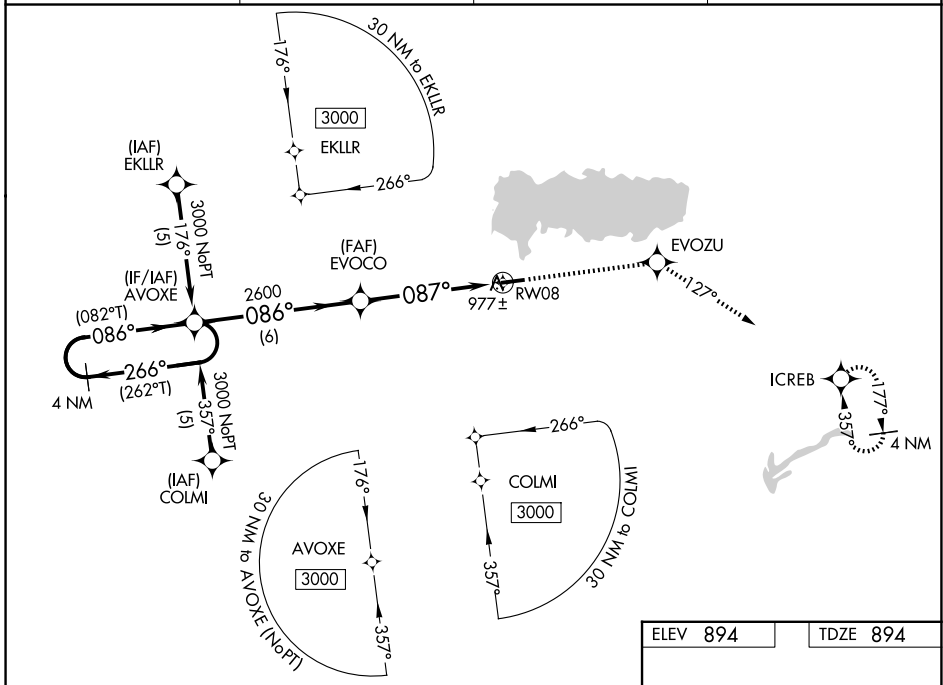
WAAS CH <b>61116</b> <b>W08A</b>	APP CRS <b>087°</b>	Rwy Ldg 4400
		TDZE 894
		Apt Elev 894

# RNAV (GPS) RWY 8

LAKEFIELD (CQA)

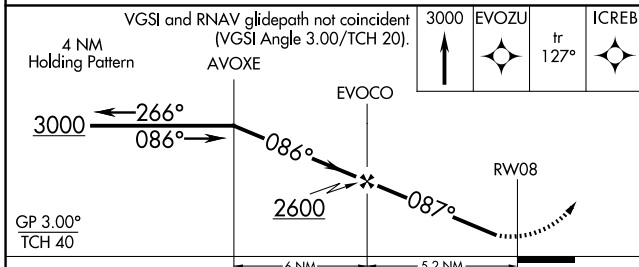
RNP APCH - GPS.	<p>▼ Helicopter visibility reduction below 3/4 SM NA. Baro-VNAV NA. Use AXV altimeter setting. When not received use DAY altimeter setting and increase LPV DA to 1293 and all Cats visibility 1/2 SM, increase LNAV/VNAV DA to 1350 and all Cats visibility 1/2 SM, increase all MDAs 80 feet and visibility Cat C 1/4 SM.</p> <p>▲ NA</p>	<p>MISSED APPROACH: Climb to 3000 direct EVOZU and on track 127° to ICREB and hold.</p>
-----------------	---	---

AXV AWOS-3PT <b>128.325</b>	COLUMBUS APP CON <b>134.45 352.05</b>	UNICOM <b>122.8</b> (CTAF)	<b>123.3 0</b>
--------------------------------	--	-------------------------------	----------------

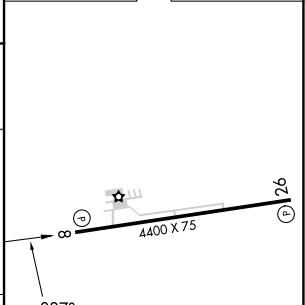


EC-2, 16 APR 2026 to 14 MAY 2026

EC-2, 16 APR 2026 to 14 MAY 2026



ELEV 894	TDZE 894
----------	----------



CATEGORY	A	B	C	D
LPV DA	1221-1¼	327 (400-1¼)		NA
LNAV/VNAV DA	1278-1¼	384 (400-1¼)		NA
LNAV MDA	1440-1	546 (600-1)	1440-1½ 546 (600-1½)	NA
CIRCLING	1440-1	546 (600-1)	1520-1¾ 626 (700-1¾)	NA

REIL Rwy 8 and 26 0  
MIRL Rwy 8-26 0