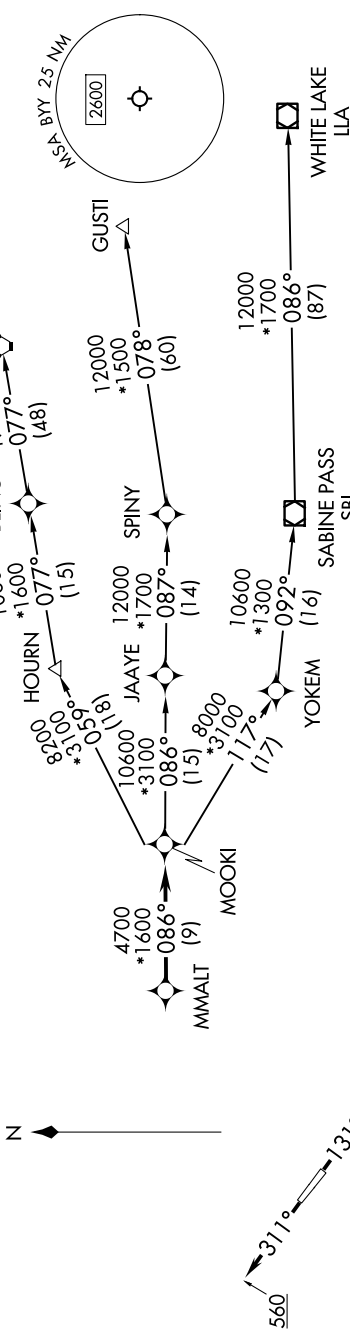


# MMALT SEVEN DEPARTURE (RNAV)

SC-5, 16 APR 2026 to 14 MAY 2026

RNAV 1 - DME/DME/IRU or GPS.  
RADAR required.

HOUSTON DEP CON  
128.6 360.85



**TOP ALTITUDE:  
ASSIGNED BY ATC**

NOTE: GUSTI and LCH Transitions ATC assigned only for aircraft departing AXH, EFD, GLS, HPY, IWS, LBX, LVJ, SGR, TME, T00, T41 and 54T.

## DEPARTURE ROUTE DESCRIPTION

**TAKEOFF RUNWAY 13:** Climb on heading 131° to 560, for RADAR vectors to MMALT, thence. . . .  
**TAKEOFF RUNWAY 31:** Climb on heading 311° to 560, for RADAR vectors to MMALT, thence. . . .

. . . on track 086° to MOOKI, then on (transition). Maintain ATC assigned altitude.  
Expect filed altitude 10 minutes after departure.

GUSTI TRANSITION (MMALT7.GUSTI)  
LAKE CHARLES TRANSITION (MMALT7.LCH)  
WHITE LAKE TRANSITION (MMALT7.LLA)

**TAKEOFF MINIMUMS**  
Rwys 13, 31: Standard with minimum climb of 500' /NM to 560.

NOTE: Chart not to scale.

# MMALT SEVEN DEPARTURE (RNAV)

(MMALT7.MMALT) 30NOV23