

VORTAC UKW <b>117.15</b> Chan <b>118</b> (Y)	APP CRS <b>175°</b>	Rwy Ldg TDZE Apt Elev	<b>5005</b> <b>842</b> <b>864</b>
----------------------------------------------------	------------------------	-----------------------------	-----------------------------------------

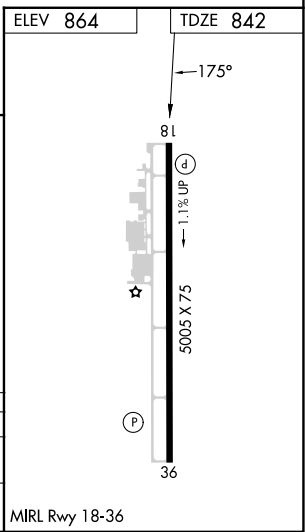
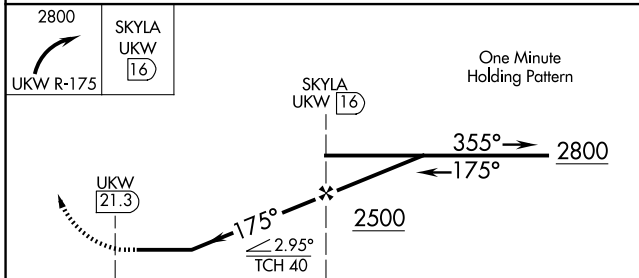
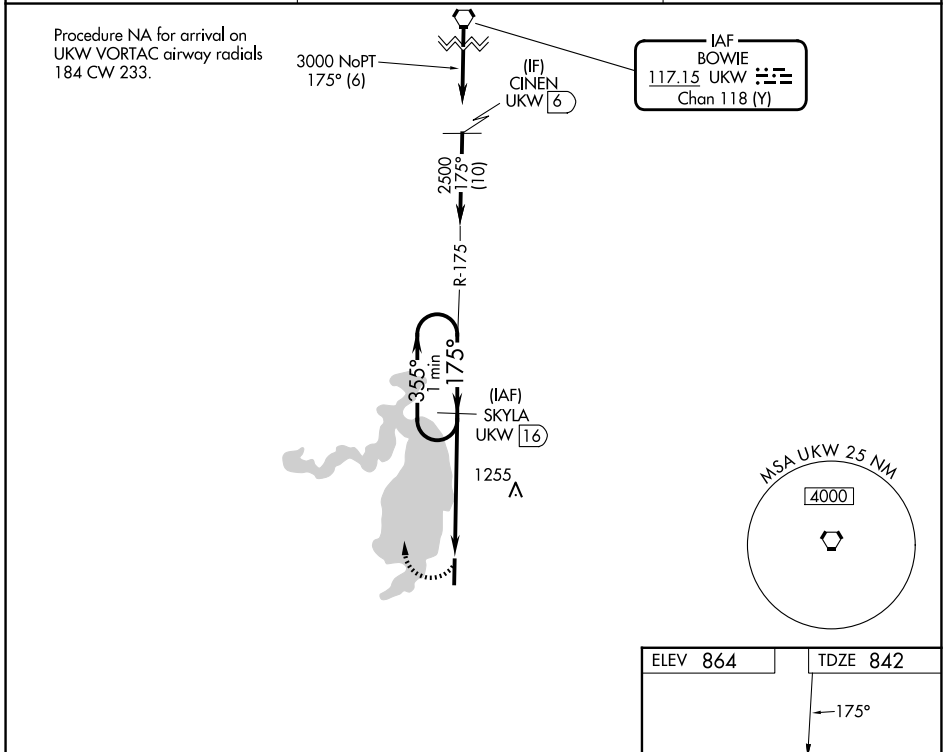
# VOR/DME RWY 18

BRIDGEPORT MUNI (XBP)

**⚠** Visibility reduction by helicopters NA. When local altimeter setting not received, use Decatur altimeter setting and increase all MDA 60 feet.

**⚠** MISSED APPROACH: Climbing right turn to 2800 via UKW VORTAC R-175 to SKYLA/UKW 16 DME and hold.

AWOS-3PT <b>119.225</b>	FORT WORTH CENTER <b>127.0 360.6</b>	UNICOM <b>123.0</b> (CTAF)
----------------------------	-----------------------------------------	-------------------------------



CATEGORY	A	B	C	D
S-18	1440-1 598 (600-1)	1440-1¼ 598 (600-1¼)		NA
CIRCLING	1480-1 616 (700-1)	1480-1¼ 616 (700-1¼)		NA