

WAAS CH 70337 W17A	APP CRS 168°	Rwy Ldg TDZE Apt Elev	5002 936 936
--	------------------------	-----------------------------	---

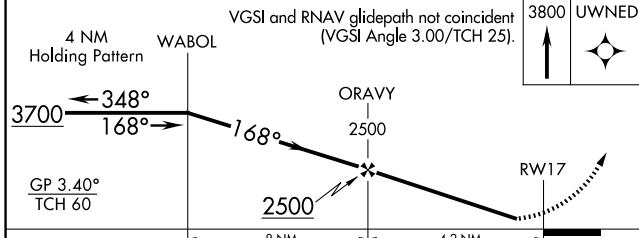
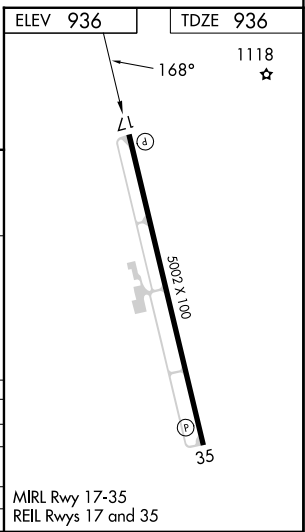
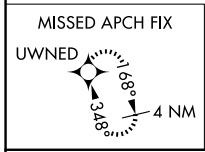
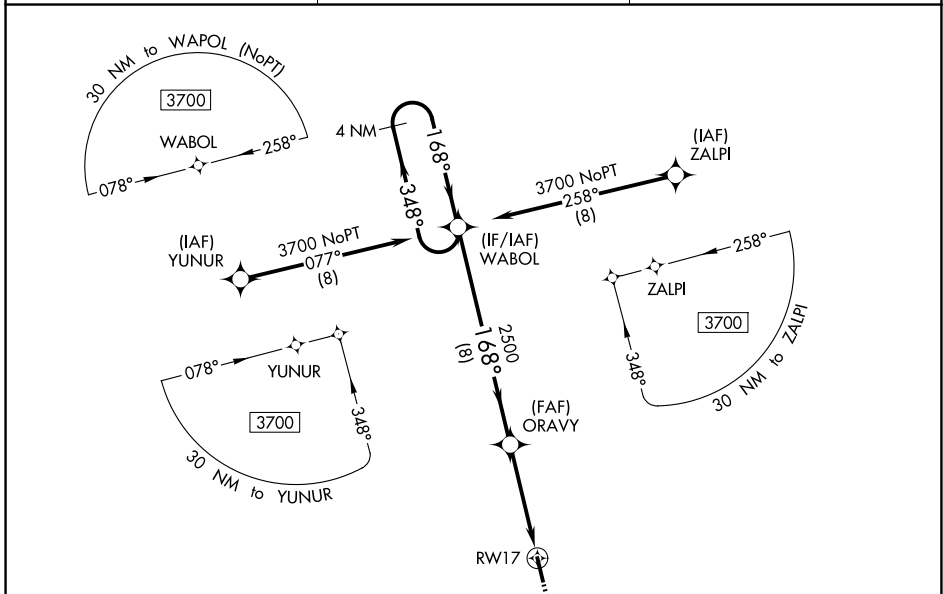
RNAV (GPS) RWY 17

LAWRENCEBURG/LAWRENCE COUNTY (FLEEMAN FLD) (2M2)

▲ NA For uncompensated Baro-VNAV systems, LNAV/VNAV NA below -15°C (5°F) or above 54°C (130°F). DME/DME RNP-0.3 NA. When local altimeter setting not received, use Huntsville Intl-Carl T Jones Fld altimeter setting and increase all DA 142 feet and all MDA 140 feet; increase LPV all Cats visibility ¼ mile, LNAV/VNAV all Cats visibility ⅓ mile. Straight-in Rwy 17 NA at night, Circling Rwy 17 NA at night. Rwy 17 helicopter visibility reduction below 1 SM NA.

MISSED APPROACH:
Climb to 3800 direct UWNED and hold.

AWOS-3 120.175	MEMPHIS CENTER 125.85 379.25	UNICOM 122.8 (CTAF)
--------------------------	--	-------------------------------



CATEGORY	A	B	C	D
LPV DA	1225-1	289 (300-1)		NA
LNAV/VNAV DA	1394-1⅓	458 (500-1⅓)		NA
LNAV MDA	1540-1	604 (700-1)		NA
CIRCLING	1540-1	604 (700-1)		NA

MIRL Rwy 17-35
REIL Rwy 17 and 35

RNAV (GPS) RWY 17

SE-1, 16 APR 2026 to 14 MAY 2026

SE-1, 16 APR 2026 to 14 MAY 2026