

WAAS CH 78402 W12A	APP CRS 123°	Rwy Idg TDZE Apt Elev	3588 1051 1051
----------------------------------------	------------------------	-----------------------------	-------------------------------------------

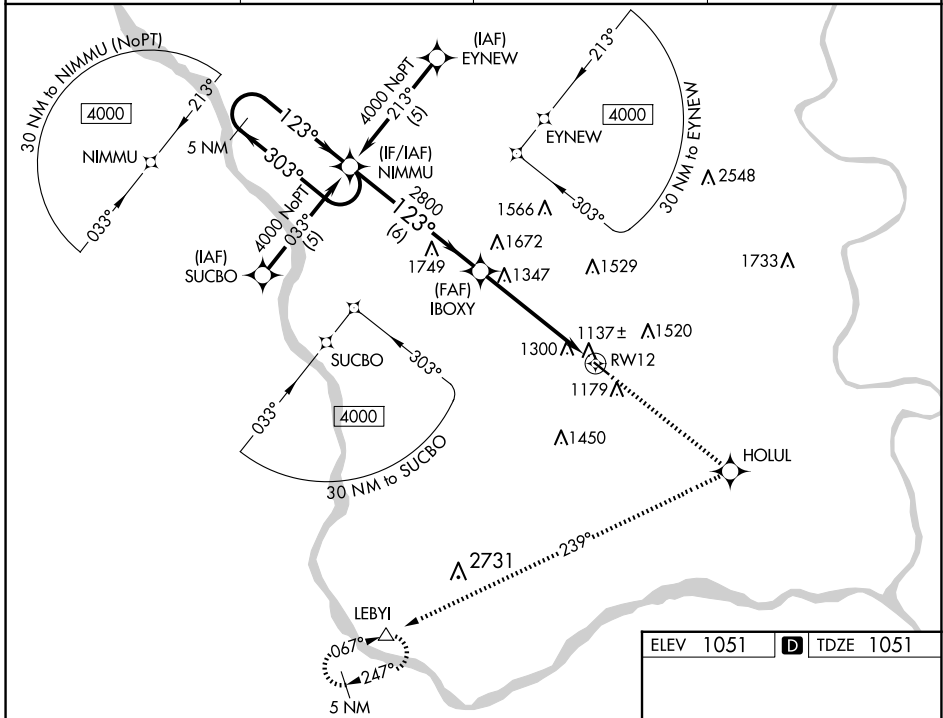
RNAV (GPS) RWY 12

MILLARD (M.L.E.)

⚠ DME/DME RNP-0.3 NA. If local altimeter setting not received, use Council Bluffs Muni altimeter setting and increase all DAs/MDAs 80 feet. Baro-VNAV NA when using Council Bluffs Muni altimeter setting. For uncompensated Baro-VNAV systems, LNAV/VNAV NA below -17°C (2°F) or above 54°C (130°F). Visibility reduction by helicopters/NA.

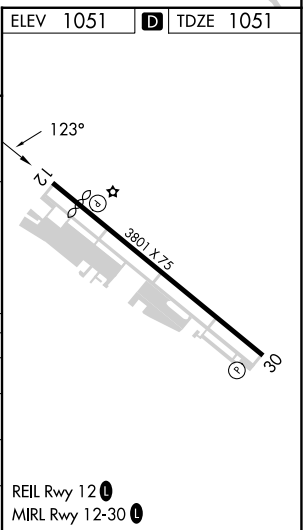
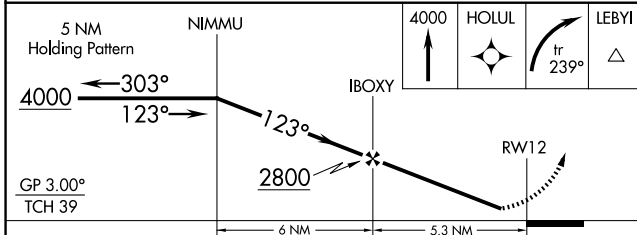
MISSED APPROACH: Climb to 4000 direct HOLUL and right turn via 239° track to LEBYI and hold.

AWOS-3 118.25	OMAHA APP CON 135.875 354.05	CLNC DEL 125.4	UNICOM 123.0 (CTAF) 0
-------------------------	----------------------------------------	--------------------------	---------------------------------



NC-2, 16 APR 2026 to 14 MAY 2026

NC-2, 16 APR 2026 to 14 MAY 2026



CATEGORY	A	B	C	D
LPV DA	1387-1¼	336 (400-1¼)		NA
LNAV/VNAV DA	1668-2	617 (700-2)		NA
LNAV MDA	1660-1	609 (700-1)		NA
CIRCLING	1700-2 649 (700-2)	1720-2 669 (700-2)		NA