

WAAS CH <b>58112</b> <b>W05A</b>	APP CRS <b>050°</b>	Rwy Ldg TDZE <b>123</b> Apt Elev <b>125</b>	<b>5001</b>
--	------------------------	---	-------------

# RNAV (GPS) RWY 5

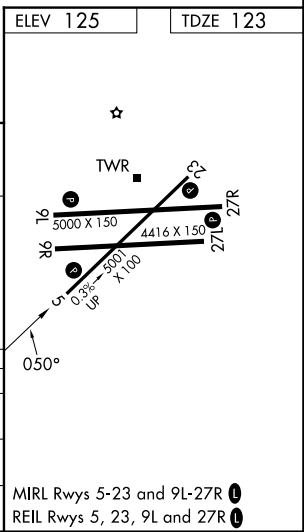
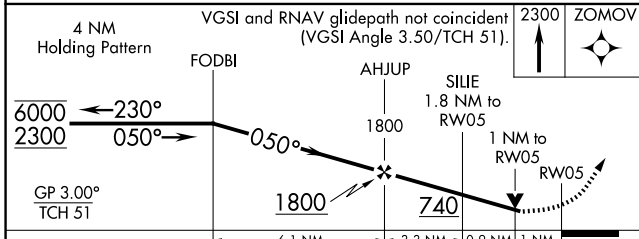
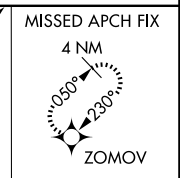
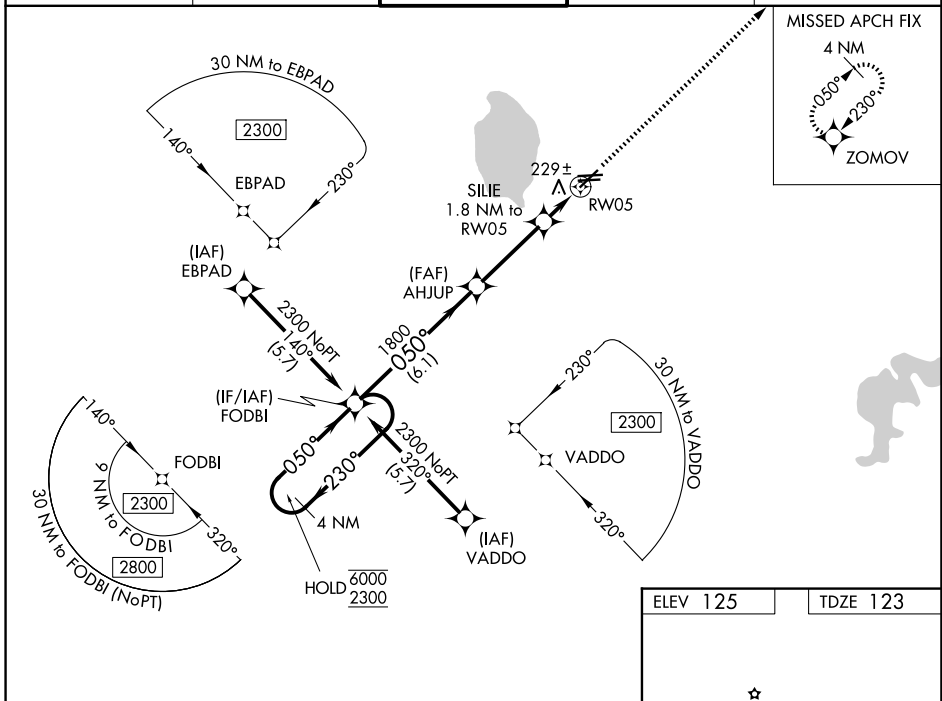
BARTOW EXEC (BOW)

RNP APCH - GPS.

▼ Rwy 5 helicopter visibility reduction below 3/4 SM NA. Baro-VNAV and VDP NA when using TPA altimeter setting. For uncompensated Baro-VNAV systems, LNAV/VNAV NA below -15°C or above 54°C. When local altimeter setting not received, use TPA altimeter setting and increase LPV DA to 556 feet, LNAV/VNAV DA to 618 feet and LNAV MDA 120 feet. Increase LPV and LNAV/VNAV all Cats visibility and LNAV Cat C/D visibility 1/4 SM.

MISSED APPROACH:  
Climb to 2300 direct ZOMOV and hold.

AWOS-3 <b>123.775</b>	TAMPA APP CON <b>120.65 290.3</b>	<b>BARTOW TOWER ★</b> <b>121.20</b> (CTAF)	GND CON <b>121.9</b>	UNICOM <b>122.95</b>
--------------------------	--------------------------------------	---	-------------------------	-------------------------



CATEGORY	A	B	C	D
LPV DA	447-1		324 (400-1)	
LNAV/VNAV DA	509-1 1/8		386 (400-1 1/8)	
LNAV MDA	520-1	397 (400-1)	520-1 1/8	397 (400-1 1/8)

SE-3, 16 APR 2026 to 14 MAY 2026

SE-3, 16 APR 2026 to 14 MAY 2026