

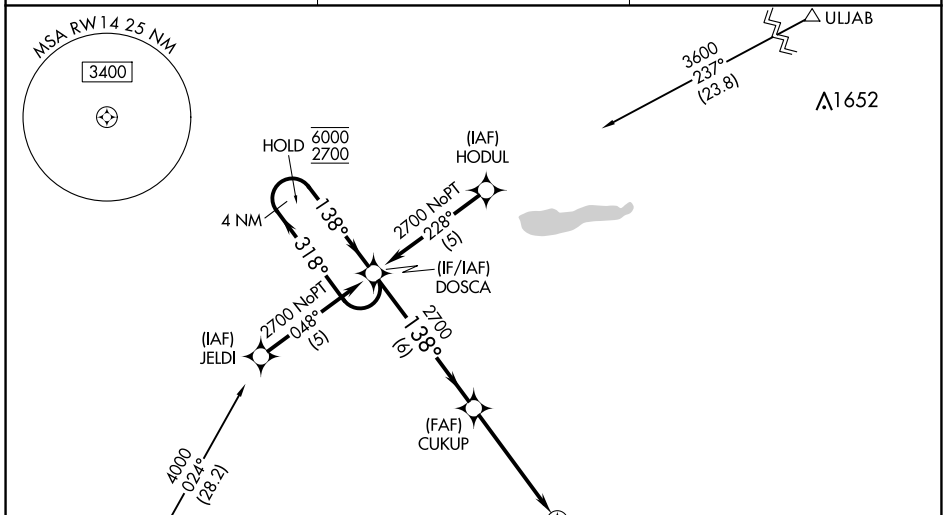
WAAS CH 49210 W14A	APP CRS 138°	Rwy Idg TDZE Apt Elev	4000 1039 1039
--	------------------------	-----------------------------	---

RNAV (GPS) RWY 14

BENSON MUNI (BBB)

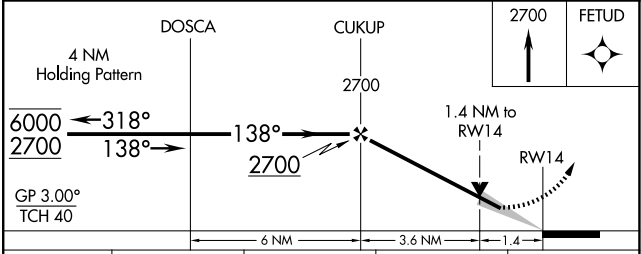
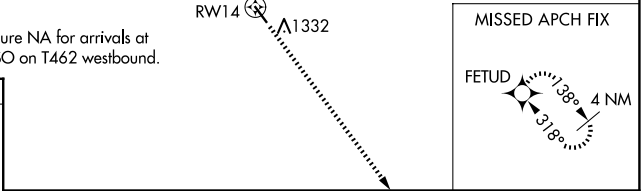
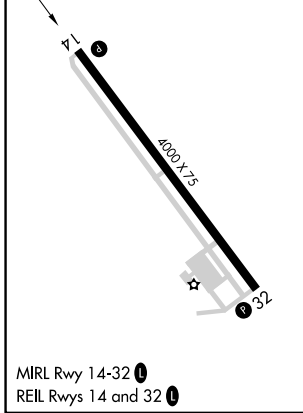
RNP APCH - GPS.	MISSED APPROACH: Climb to 2700 direct FETUD and hold.
<p>⚠ For uncompensated Baro-VNAV systems, LNAV/VNAV NA below -17°C or above 54°C. Baro-VNAV and VDP NA when using Appleton altimeter setting. When local altimeter setting not received, use Appleton altimeter setting and increase LPV DA to 1422 feet and all visibilities $\frac{1}{8}$ SM; increase LNAV/VNAV DA to 1466 feet and all visibilities $\frac{1}{8}$ SM; increase all MDAs 40 feet.</p>	

AWOS-3PT 118.45	MINNEAPOLIS CENTER 125.5 323.1	UNICOM 122.8 (CTAF) 📻
---------------------------	--	--



Procedure NA for arrivals at DAWSO on T462 westbound.

ELEV 1039	TDZE 1039
-----------	-----------



CATEGORY	A	B	C	D
LPV DA	1382-1	343 (400-1)		NA
LNAV/VNAV DA	1426-1 $\frac{1}{8}$	387 (400-1 $\frac{1}{8}$)		NA
LNAV MDA	1540-1	501 (600-1)		NA

NC-1, 16 APR 2026 to 14 MAY 2026

NC-1, 16 APR 2026 to 14 MAY 2026