


LOC/DME I-LHM 108.75 Chan 24 (Y)	APP CRS 151°	Rwy Idg TDZE 121 Apt Elev 121
--	------------------------	---

ILS or LOC RWY 15

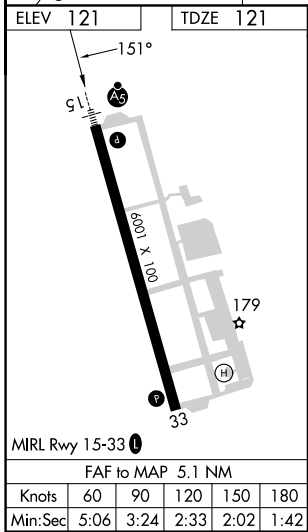
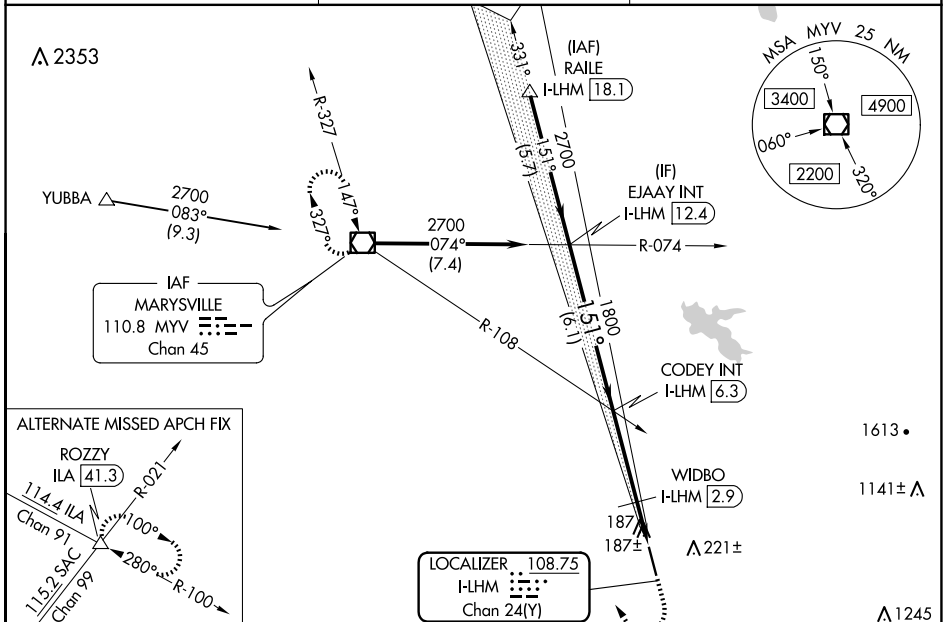
LINCOLN RGNL/KARL HARDER FLD (LHM)


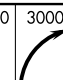
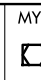
NA When local altimeter setting not received, use Beale AFB altimeter setting and increase DA to 361 feet and all MDAs 40 feet; increase S-LOC 1.5 Cat C/D and Circling Cat D visibility ¼ SM. VDP NA with Beale AFB altimeter setting. WIDBO fix minimums: for inop ALS, increase S-LOC 1.5 Cat D visibility to 1 mile.

MAISLR 

MISSED APPROACH: Climb to 1200 then climbing right turn to 3000 direct MYV VOR/DME and hold.

AWOS-3 124.25	NORCAL APP CON 125.4 259.1	UNICOM 123.0 (CTAF)
-------------------------	--------------------------------------	-------------------------------



EJAAY INT I-LHM 12.4	#640 when using Beale AFB altimeter setting.		1200	3000	MYV
CODEY INT I-LHM 6.3	WIDBO I-LHM 2.9				
2700	1800	1800	*I-LHM 2.1	*LOC only	
GS 3.00° TCH 46	6.1 NM	3.4 NM	0.8 NM	0.9 NM	
CATEGORY	A	B	C	D	
S-ILS 15	321-½ 200 (200-½)				
S-LOC 15	600-½	479 (500-½)	600-¾ 479 (500-¾)	600-1 479 (500-1)	
CIRCLING	600-1	479 (500-1)	600-1½ 479 (500-1½)	760-2 639 (700-2)	
WIDBO FIX MINIMUMS					
S-LOC 15	460-½	339 (400-½)	460-¾ 339 (400-¾)		
CIRCLING	520-1 399 (400-1)	580-1 459 (500-1)	600-1½ 479 (500-1½)	760-2 639 (700-2)	

SW-2, 16 APR 2026 to 14 MAY 2026

SW-2, 16 APR 2026 to 14 MAY 2026