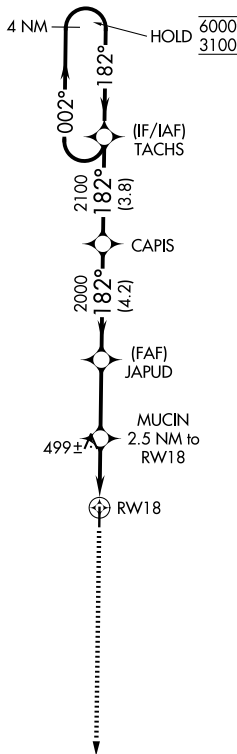
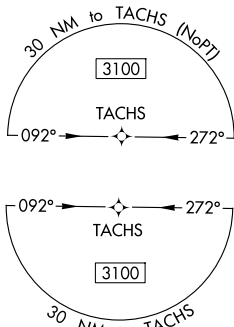


WAAS CH <b>45543</b> <b>W18A</b>	APP CRS <b>182°</b>	Rwy Ldg TDZE <b>273</b> Apt Elev <b>273</b>
--	------------------------	---

# RNAV (GPS) RWY 18

POCAHONTAS MUNI (M7)

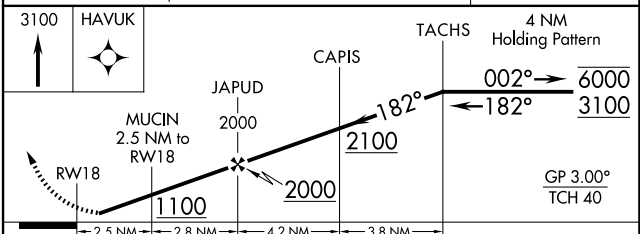
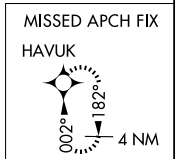
RNP APCH. Rwy 18 helicopter visibility reduction below 3/4 SM NA. Baro-VNAV NA. Use Walnut Ridge altimeter setting.		MISSED APPROACH: Climb to 3100 direct HAVUK and hold.
ARG AWOS-3PT <b>126.525</b>	MEMPHIS CENTER <b>120.075 289.4</b>	UNICOM <b>122.8 (CTAF)</b>



SC-1, 16 APR 2026 to 14 MAY 2026

SC-1, 16 APR 2026 to 14 MAY 2026

ELEV 273	TDZE 273
REIL Rwy 18 and 36 MIRL Rwy 18-36	



CATEGORY	A	B	C	D
LPV DA	571-1 298 (300-1)			
LNAV/VNAV DA	733-1 3/8 460 (500-1 3/8)			
LNAV MDA	780-1 507 (600-1)		780-1 3/8 507 (600-1 3/8)	
CIRCLING	900-1 627 (700-1)		1100-2 1/2 827 (900-2 1/2)	1100-2 3/4 827 (900-2 3/4)