

BARMY FIVE DEPARTURE (RNAV)

SE-2, 16 APR 2026 to 14 MAY 2026

CHARLOTTE DEP CON
 120.05 307.8
 AWOS-3
 120.825
 GCO
 121.725
 UNICOM
 122.725

TOP ALTITUDE:
3000

RNAV 1 - DME/DME/IRU or GPS.
 RADAR required.



RALEIGH/DURHAM
 RDU



FL180
 *2300
 048°
 (22)



NOTE: For turbo jets only.
 NOTE: If unable to accept climb rates, advise ATC on initial contact.
 NOTE: Transponder code will be issued via PDC or Charlotte CLNC DEL.
 NOTE: Upon reaching 10000 MSL, accelerate to and maintain 280K,
 if unable advise ATC.

FL180
 *1900
 077°
 (39)



10400
 *2100
 077°
 (13)



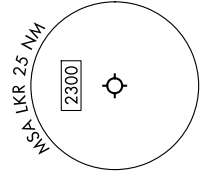
FL180
 *3400
 084°
 (70)



FL180
 *3300
 078°
 (17)



TAKEOFF MINIMUMS
 Rwys 6, 24: Standard.



NOTE: Chart not to scale.

DEPARTURE ROUTE DESCRIPTION

Climb on heading assigned by ATC on RADAR vectors to MESHY, then on depicted route to BARMY. Then on assigned transition. Maintain 3000, expect clearance to filed altitude within 10 minutes after departure.

- NUITZE TRANSITION (BARMY5.NUITZE)
- RALEIGH/DURHAM TRANSITION (BARMY5.RDU)
- TAR RIVER TRANSITION (BARMY5.TYI)

BARMY FIVE DEPARTURE (RNAV)

SE-2, 16 APR 2026 to 14 MAY 2026