

(BEAVY6.BEAVY) 24081

AL-5853 (FAA)

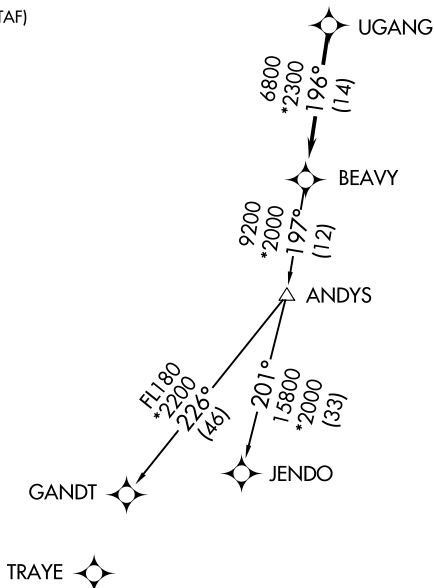
BEAVY SIX DEPARTURE (RNAV)

LANCASTER COUNTY-MC WHIRTER FLD (LKR)
LANCASTER, SOUTH CAROLINA

CHARLOTTE DEP CON
120.05 307.8
AWOS-3
120.825
GCO
121.725
UNICOM (CTAF)
122.725

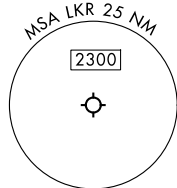
RNAV 1-DME/DME/IRU or GPS.
RADAR required.

**TOP ALTITUDE:
3000**



TAKEOFF MINIMUMS
Rwys 6, 24: Standard.

- NOTE: For turbo jets only.
- NOTE: If unable to accept climb rates, advise ATC on initial contact.
- NOTE: Transponder code will be issued via PDC or Charlotte CLNC DEL.
- NOTE: Upon reaching 10000 MSL, accelerate to and maintain 280K, if unable advise ATC.



NOTE: Chart not to scale.

DEPARTURE ROUTE DESCRIPTION

Climb on heading assigned by ATC, on RADAR vectors to UGANG, then on depicted route to BEAVY. Then on assigned transition maintain 3000, expect clearance to filed altitude within 10 minutes after departure.

GANDT TRANSITION (BEAVY6.GANDT)
JENDO TRANSITION (BEAVY6.JENDO)

BEAVY SIX DEPARTURE (RNAV)
(BEAVY6.BEAVY) 21MAR24

LANCASTER, SOUTH CAROLINA
LANCASTER COUNTY-MC WHIRTER FLD (LKR)

SE-2, 16 APR 2026 to 14 MAY 2026

SE-2, 16 APR 2026 to 14 MAY 2026