

WAAS CH 93635	APP CRS 324°	Rwy Ldg TDZE 448	4200
W32A		Apt Elev 455	

RNAV (GPS) RWY 32

WHITE MOUNTAIN RGNL (IZG)

RNP APCH - GPS.

⚠ Rwy 32 helicopter visibility reduction below 3/4 SM NA. VDP NA when using LEW altimeter setting. Circling Rwy 14 NA at night. When local altimeter setting not received, use LEW altimeter setting and increase LPV DA to 1005 feet and all visibilities 1/2 SM; increase all MDAs 100 feet and LNAV visibility Cat B/C 1/2 SM, and Circling visibility Cat B 1/2 SM.

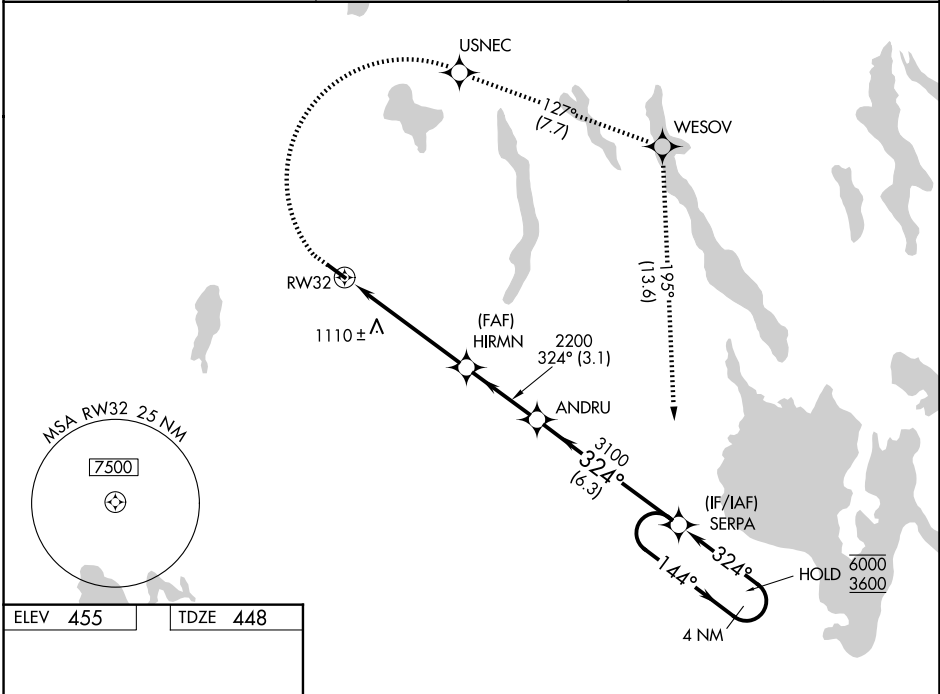
❄ -28°C

MISSED APPROACH: Climb to 1490 then climbing right turn to 3600 direct USNEC and on track 127° to WESOV and on track 195° to SERPA and hold.

ASOS
135.775

PORTLAND APP CON ★
119.75 269.35

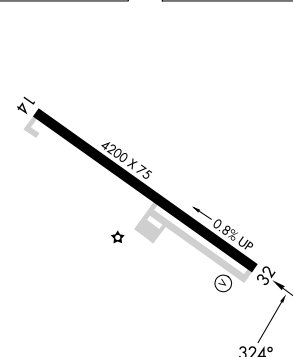
UNICOM
122.8 (CTAF) 0



NE-1, 16 APR 2026 to 14 MAY 2026

NE-1, 16 APR 2026 to 14 MAY 2026

ELEV 455	TDZE 448
-----------------	-----------------



REIL Rwy 32
MIRL Rwy 14-32 0

1490	3600	USNEC	tr 127°	WESOV	tr 195°	SERPA	VGSI and RNAV glidepath not coincident (VGSI Angle 3.00/TCH 17).
							4 NM Holding Pattern
		RW32	2.2 NM to RW32	HIRMN 2200	324°	ANDRU 3100	SERPA Holding Pattern
				2200	144°	6000	3600
				2200	324°	GP 3.00°	TCH 51
		2.2 NM	3.2 NM	3.1 NM	6.3 NM		
CATEGORY	A		B		C		D
LPV DA	914-1 3/8		466 (500-1 3/8)				NA
LNAV MDA	1140-1		692 (700-1)		1140-2		692 (700-2)
CIRCLING	1340-1 1/4		1400-1 1/2		1560-3		1105 (1200-3)
	885 (900-1 1/4)		945 (1000-1 1/2)				