

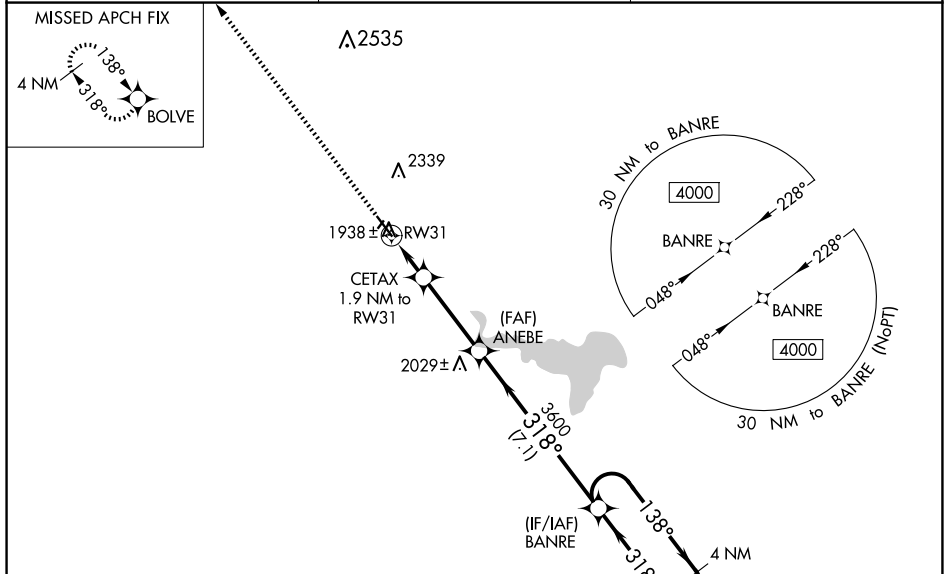
WAAS CH 93638 W31A	APP CRS 318°	Rwy Idg TDZE 1900 Apt Elev 1907	5101
--	------------------------	---	-------------

RNAV (GPS) RWY 31

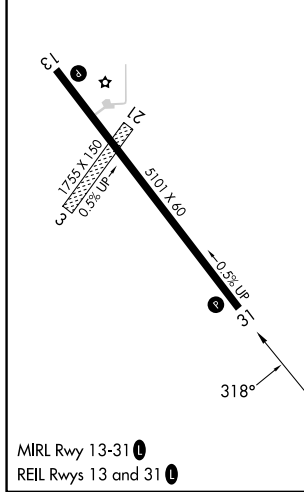
PHILLIPSBURG MUNI (PHG)

RNP APCH - GPS.	<p>⚠ Baro-VNAV NA when using Hays Rgnl altimeter setting. For uncompensated Baro-VNAV systems, LNAV/VNAV NA below -18°C or above 54°C. Circling NA northeast of Rwy 13-31. Rwy 31 helicopter visibility reduction below 1 SM NA. Circling NA to Rws 3 and 21. When local altimeter setting not received, use Hays Rgnl altimeter setting and increase all DA and MDA 140 feet, increase LPV and LNAV/VNAV visibilities ¼ mile all Cats and LNAV and Circling Cat C visibility ¼ mile.</p>	MISSED APPROACH: Climb to 4000 direct BOLVE and hold.
-----------------	--	---

AWOS-3PT 119.125	DENVER CENTER 132.7 226.675	UNICOM 122.8 (CTAF)
----------------------------	---------------------------------------	-------------------------------



ELEV 1907	TDZE 1900
-----------	-----------



4000	BOLVE	VGSi and RNAV glidepath not coincident (VGSi Angle 3.00/TCH 43).		BANRE	4 NM Holding Pattern
ANEBE	CETAX 1.9 NM to RW31	3600	3600	4000	GP 3.00° TCH 60
RW31	2540	3600	3600	4000	
	1.9	3.3 NM	7.1 NM		
CATEGORY	A	B	C	D	
LPV DA		2150-1	250 (300-1)		NA
LNAV/VNAV DA		2150-1	250 (300-1)		NA
LNAV MDA		2200-1	300 (300-1)		NA
C CIRCLING	2280-1 373 (400-1)	2360-1 453 (500-1)	2380-1½ 473 (500-1½)		NA

NC-2, 16 APR 2026 to 14 MAY 2026

NC-2, 16 APR 2026 to 14 MAY 2026