

APP CRS	Rwy Ldg	<b>3000</b>
<b>360°</b>	TDZE	<b>137</b>
	Apt Elev	<b>137</b>

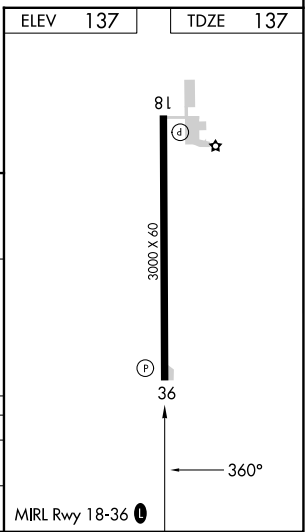
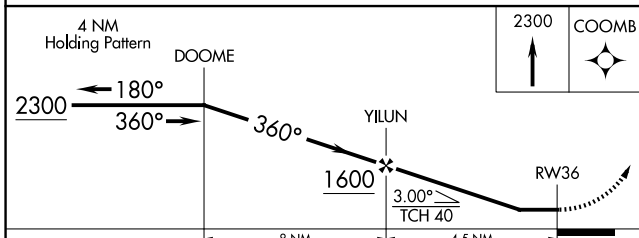
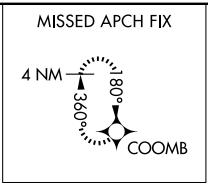
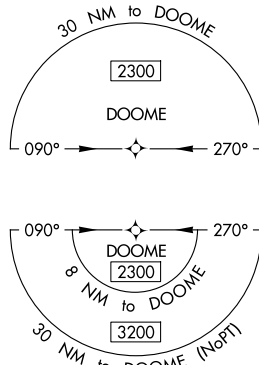
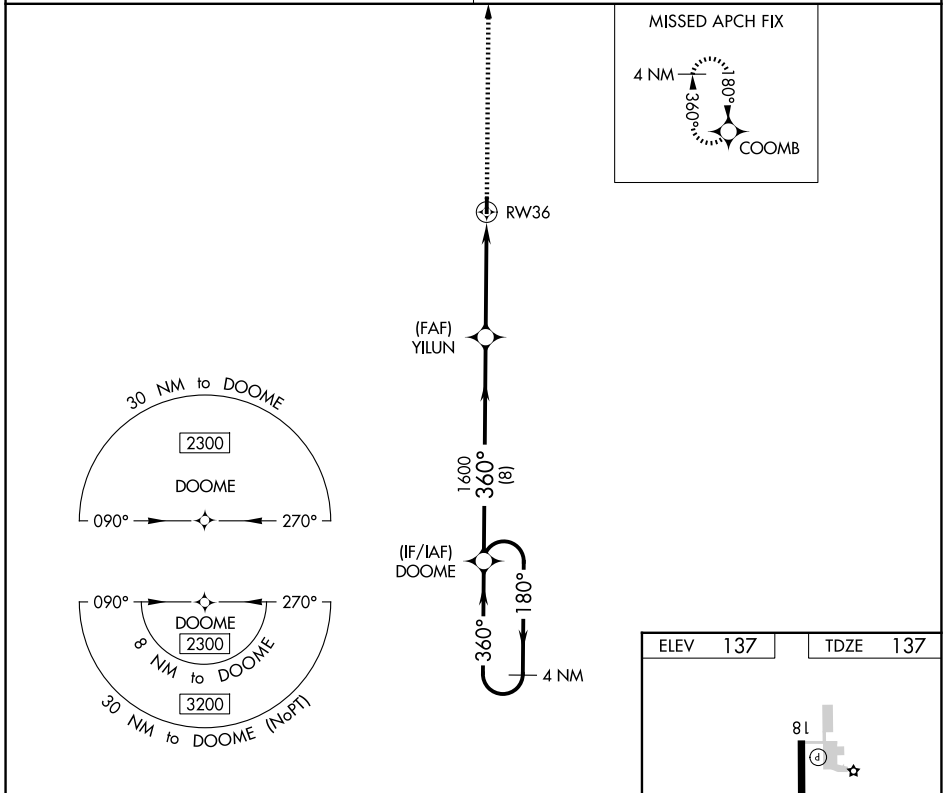
# RNAV (GPS) RWY 36

RULEVILLE-DREW (M37)

**NA** DME/DME RNP-0.3 NA. Use Cleveland altimeter setting; when not received, use Greenwood altimeter setting and increase all MDA 40 feet; increase LNAV Cat C visibility 1/8 mile and Circling Cat C visibility 1/4 mile. Procedure NA at night. Helicopter visibility reduction below 1 SM NA.

MISSED APPROACH: Climb to 2300 direct COOMB and hold.

MEMPHIS CENTER <b>135.875 269.35</b>	CTAF <b>122.9</b>
---	----------------------



CATEGORY	A	B	C	D
LNAV MDA	620-1	483 (500-1)	620-1 3/8 483 (500-1 3/8)	NA
CIRCLING	620-1 483 (500-1)	720-1 583 (600-1)	780-1 3/4 643 (700-1 3/4)	NA

SC-4, 16 APR 2026 to 14 MAY 2026

SC-4, 16 APR 2026 to 14 MAY 2026