

NDB HS	APP CRS	Rwy Ldg	8498
221	181°	TDZE	23
		Apt Elev	23

NDB RWY 18

STENNIS INTL (HSA)

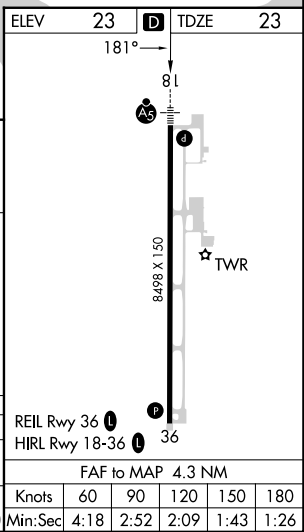
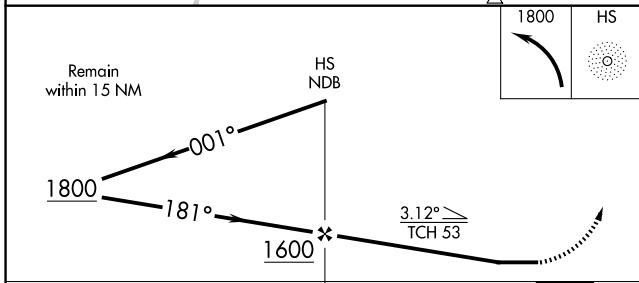
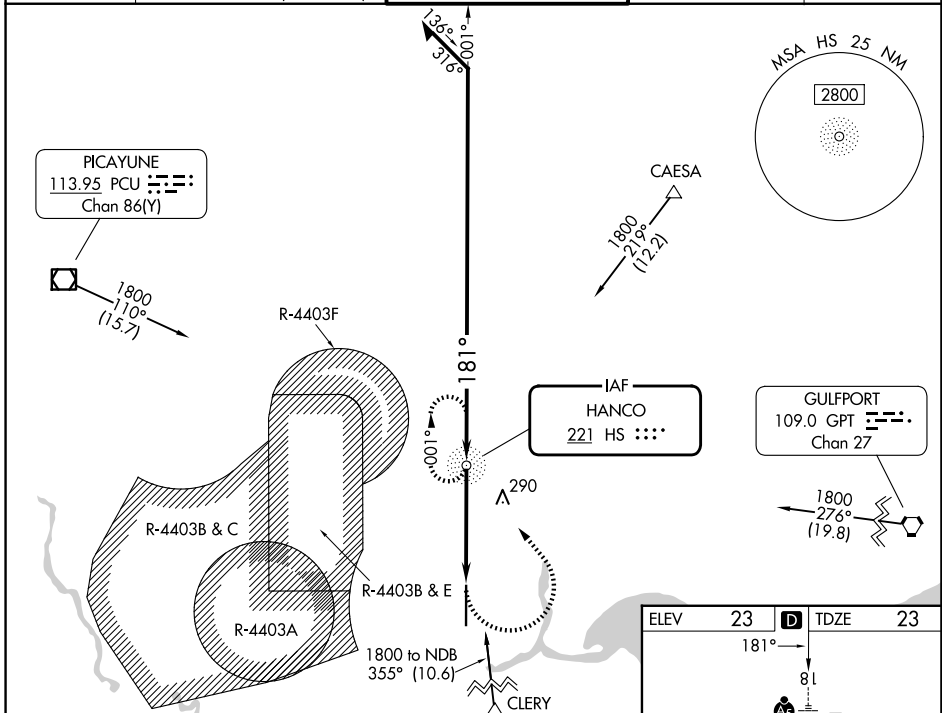
Procedure NA when R4403B and R4403E are active. Circling NA for Cat E west of Rwy 18-36.
⚠ When local altimeter setting not received use Gulfport altimeter setting and increase all MDAs 60 feet and increase S-18 Cat C/D/E and Circling Cat C visibility 1/8 SM and Circling Cat D/E visibility 1/4 SM. For inop ALS, increase S-18 Cat A/B visibility to 1 SM, and Cat C/D/E visibility to 1 1/2 SM. For inop ALS when using Gulfport altimeter setting, increase Cat C/D/E visibility to 1 1/2 SM.

MALS



MISSED APPROACH:
 Climbing left turn to 1800 direct HS NDB and hold.

AWOS-3PT 118.375	GULFPORT APP CON* 124.6 354.1 (130°-309°) 127.5 254.25 (310°-129°)	STENNIS TOWER* 127.15 (CTAF) 229.4	GND CON 121.725 229.4	UNICOM 122.95
----------------------------	--	---	---------------------------------	-------------------------



ELEV	23	TDZE	23
181°		81	
REIL Rwy 36			
HIRL Rwy 18-36			
FAF to MAP 4.3 NM			
CATEGORY	A	B	C
S-18	600-3/4	577 (600-3/4)	600-1 1/4 577 (600-1 1/4)
CIRCLING	600-1	577 (600-1)	600-1 5/8 820-2 1/2 820-2 3/4
			577 (600-1 5/8) 797 (800-2 1/2) 797 (800-2 3/4)
Knots	60	90	120 150 180
Min:Sec	4:18	2:52	2:09 1:43 1:26

SC-4, 16 APR 2026 to 14 MAY 2026

SC-4, 16 APR 2026 to 14 MAY 2026