

| | | | |
|--|------------------------|-----------------------------|---------------------------------------|
| WAAS CH 58224 W18A | APP CRS 182° | Rwy Ldg TDZE Apt Elev | 8498 23 23 |
|--|------------------------|-----------------------------|---------------------------------------|

RNAV (GPS) RWY 18

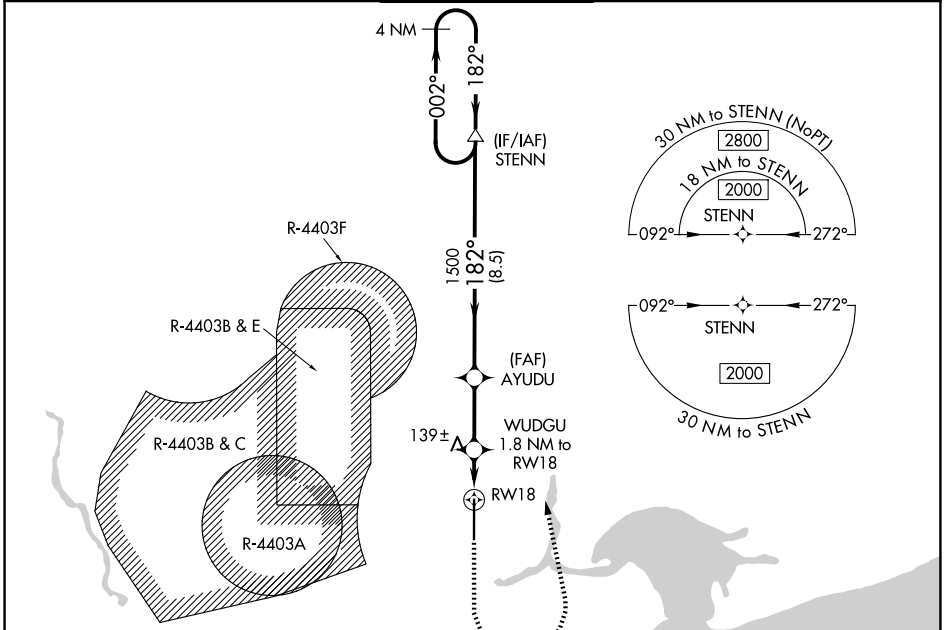
STENNIS INTL (HSA)

For uncompensated Baro-VNAV systems, LNAV/VNAV NA below -15°C (5°F) or above 54°C (130°F). Circling NA for Cat E west of Rwy 18-36. Baro-VNAV and VDP NA when using Gulfport altimeter setting. DME/DME RNP-0.3 NA. When local altimeter setting not received, use Gulfport altimeter setting: increase LPV DA to 247 feet; increase LNAV/VNAV DA to 373 feet; increase all MDA 60 feet and LNAV Cats C/D/E visibility 1/8 mile, and Circling Cats D/E visibility 1/4 mile. For inop MALSRL, increase LNAV Cats C/D/E visibility to 1 mile. For inop MALSRL when using Gulfport altimeter setting, increase LNAV Cat E visibility to 1 1/4 mile.



MISSED APPROACH:
Climb to 1400, then climbing left turn to 2000 direct STENN and hold.

| | | | | |
|----------------------------|--|---|---------------------------------|-------------------------|
| AWOS-3PT 118.375 | GULFPORT APP CON* 124.6 354.1 (130°-309°) 127.5 254.25 (310°-129°) | STENNIS TOWER* 127.15 (CTAF) 229.4 | GND CON 121.725 229.4 | UNICOM 122.95 |
|----------------------------|--|---|---------------------------------|-------------------------|



SC-4, 16 APR 2026 to 14 MAY 2026

SC-4, 16 APR 2026 to 14 MAY 2026

| | | | |
|----------------------|-----------------------|--|---|
| ELEV 23 | | D TDZE 23 | |
| 4 NM Holding Pattern | | VGSI and RNAV glidepath not coincident (VGSI Angle 3.00/TCH 56). | |
| 2000 ← 002° | | 182° → | |
| GP 3.00° TCH 56 | | 1500 | |
| STENN | | AYUDU | |
| 1500 | | WUDGU 1.8 NM to RW18 | |
| 8.5 NM | | * 640 | |
| 2.7 NM | | * 1 NM to RW18 | |
| 0.8 NM | | RW18 | |
| 0.1 NM | | RW18 | |
| 1400 | | 2000 | |
| STENN | | STENN | |
| * LNAV only. | | * LNAV only. | |
| CATEGORY | A | C | E |
| LPV DA | 223-1/2 | 200 (200-1/2) | |
| LNAV/VNAV DA | 326-1/2 | 303 (400-1/2) | |
| LNAV MDA | 400-1/2 377 (400-1/2) | 400-5/8 377 (400-5/8) | |
| CIRCLING | 480-1 457 (500-1) | 520-1 1/2 497 (500-1 1/2) | 820-2 1/2 797 (800-2 1/2) 820-2 3/4 797 (800-2 3/4) |
| REIL Rwys 36 1 | | HIRL Rwy 18-36 1 | |
| 1501 X 8498 | | TWR | |