

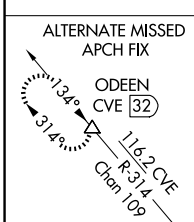
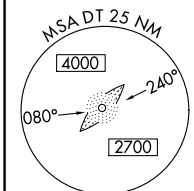
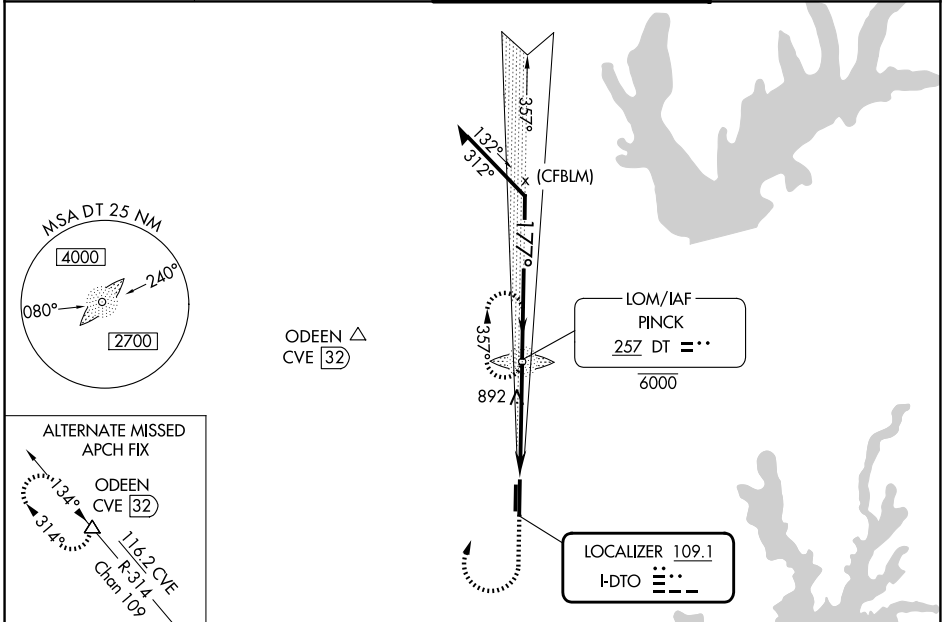
LOC I-DTO <b>109.1</b>	APP CRS <b>177°</b>	Rwy Ldg 18L 18R TDZE <b>6502 5003</b> 642 643 Apt Elev <b>643 643</b>
---------------------------	------------------------	---

# ILS or LOC RWY 18L

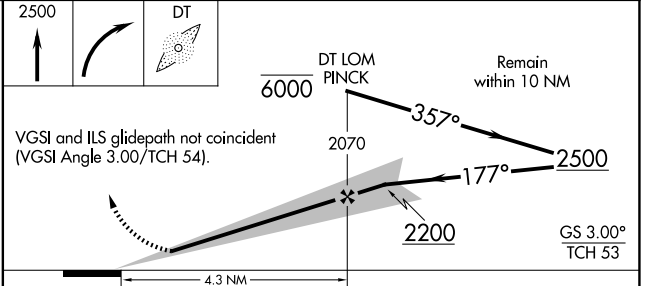
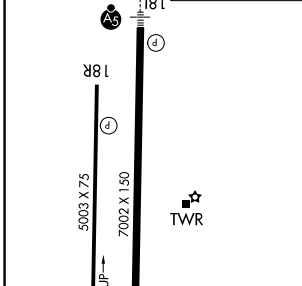
DENTON ENTERPRISE (D'TO)

ADF required. RADAR required for procedure entry.		MALSR AG	MISSED APPROACH: Climb to 2500 then right turn direct PINCK LOM and hold.
<p>▼ For inop ALS, increase S-ILS 18L all Cts visibility to 7/8 SM. For inop ALS, increase S-LOC 18L Cat C/D to 1 1/8 SM.</p> <p>▲ NA</p>			

ATIS <b>119.325</b>	LONE STAR APP CON <b>118.1 306.95</b>	DENTON TOWER ★ <b>119.95 (CTAF) 0</b>	GND CON <b>123.95</b>
------------------------	--	--	--------------------------



ELEV 643	D	TDZE 18L 642
177°	18L	TDZE 18R 643



CATEGORY	A	B	C	D
S-ILS 18L	842-1/2		200 (200-1/2)	
S-LOC 18L	1160-1/2	518 (600-1/2)	1160-1	518 (600-1)
SIDESTEP 18R	1260-1	617 (700-1)	1260-1 3/4 617 (700-1 3/4)	1260-2 617 (700-2)
CIRCLING	1260-1	617 (700-1)	1380-2 737 (800-2)	1380-2 1/4 737 (800-2 1/4)

FAF to MAP 4.3 NM					
Knots	60	90	120	150	180
Min:Sec	4:18	2:52	2:09	1:43	1:26

SC-2, 16 APR 2026 to 14 MAY 2026

SC-2, 16 APR 2026 to 14 MAY 2026