

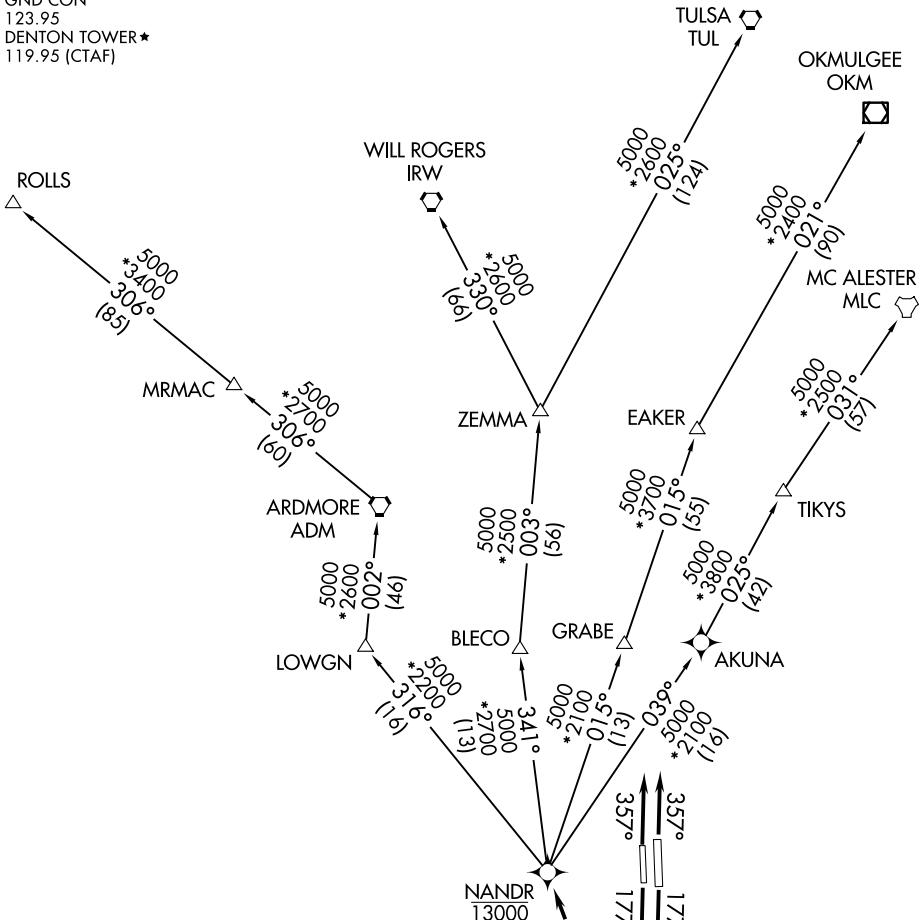
NANDR THREE DEPARTURE (RNAV)

DENTON, TEXAS

LONE STAR DEP CON
 118.1 306.95
 CLNC DEL
 123.95
 GND CON
 123.95
 DENTON TOWER★
 119.95 (CTAF)

RNAV 1 - DME/DME/IRU or GPS.
 RADAR required.

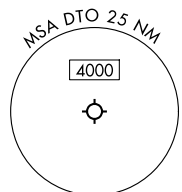
**TOP ALTITUDE:
 ASSIGNED BY ATC**



TAKEOFF MINIMUMS

Rwys 18L/R, 36L/R: Standard.

NOTE: EAKER Transition: For TUL terminal arrivals only.
 NOTE: TULSA Transition: For all aircraft overflying TUL VORTAC.
 NOTE: Aircraft arriving to the Oklahoma City terminal area, file and expect the ZEMMA enroute transition.



NOTE: Chart not to scale.

(CONTINUED ON FOLLOWING PAGE)

SC-2, 16 APR 2026 to 14 MAY 2026

SC-2, 16 APR 2026 to 14 MAY 2026

NANDR THREE DEPARTURE (RNAV)

(NANDR3.NANDR) 17APR25

DENTON, TEXAS
DENTON ENTERPRISE (D'TO)

NANDR THREE DEPARTURE (RNAV)



DEPARTURE ROUTE DESCRIPTION

TAKEOFF RUNWAYS 18L/R: Climb on heading 177° or as assigned by ATC, thence. . .
TAKEOFF RUNWAYS 36L/R: Climb on heading 357° or as assigned by ATC, thence. . .

. . .expect RADAR vectors to cross CUZNO at or above 3000, then on track 357°
to cross NANDR at or below 13000, then on assigned transition.

- EAKER TRANSITION (NANDR3.EAKER)
- MC ALESTER TRANSITION (NANDR3.MLC)
- OKMULGEE TRANSITION (NANDR3.OKM)
- ROLLS TRANSITION (NANDR3.ROLLS)
- TULSA TRANSITION (NANDR3.TUL)
- WILL ROGERS TRANSITION (NANDR3.IRW)
- ZEMMA TRANSITION (NANDR3.ZEMMA)

SC-2, 16 APR 2026 to 14 MAY 2026

SC-2, 16 APR 2026 to 14 MAY 2026