

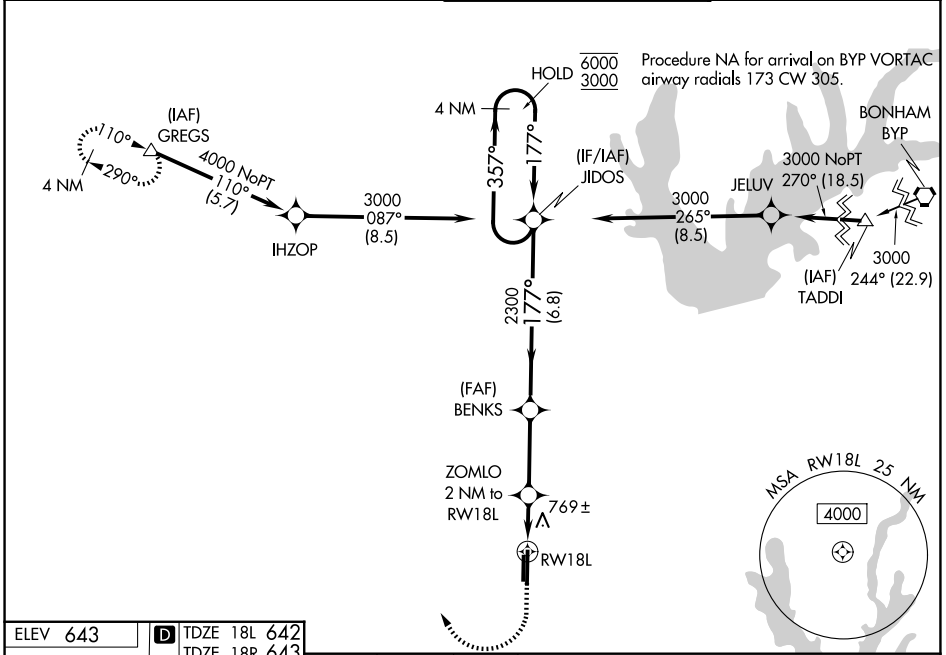
WAAS CH 82143 W18A	APP CRS 177°	Rwy Ldg TDZE Apt Elev	18L 6502 642 643	18R 5003 643 643
--	------------------------	-----------------------------	--	--

RNAV (GPS) RWY 18L

DENTON ENTERPRISE (D'TO)

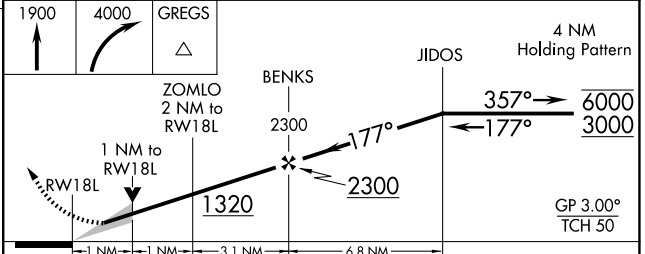
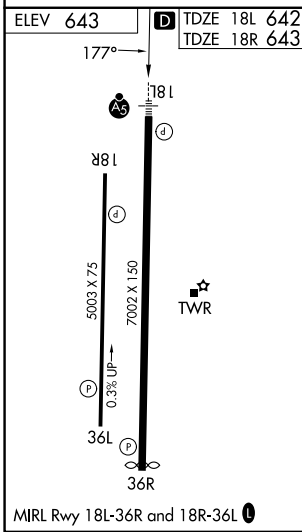
RNP APCH-GPS.			MISSED APPROACH: Climb to 1900 then climbing right turn to 4000 direct GREGS and hold.
For uncompensated Baro-VNAV systems, LNAV/VNAV NA below -9°C or above 54°C. For inop ALS, increase LNAV/VNAV all Cats visibility to 3/8 SM, and LNAV Cats C and D to 1 SM.			

ATIS 119.325	LONE STAR APP CON 118.1 306.95	DENTON TOWER ★ 119.95 (CTAF)	GND CON 123.95
------------------------	--	--	--------------------------



SC-2, 16 APR 2026 to 14 MAY 2026

SC-2, 16 APR 2026 to 14 MAY 2026



CATEGORY	A	B	C	D
LPV DA		842-1/2	200 (200-1/2)	
LNAV/VNAV DA		950-1/2	308 (400-1/2)	
LNAV MDA	1020-1/2	378 (400-1/2)	1020-3/4	378 (400-3/4)
SIDESTEP 18R	1100-1	457 (500-1)	1100-1 1/2 457 (500-1 1/2)	1100-2 457 (500-2)
CIRCLING	1100-1 457 (500-1)	1260-1 617 (700-1)	1380-2 737 (800-2)	1380-2 1/4 737 (800-2 1/4)