

RNAV (GPS) RWY 36L

DENTON ENTERPRISE (DTON)

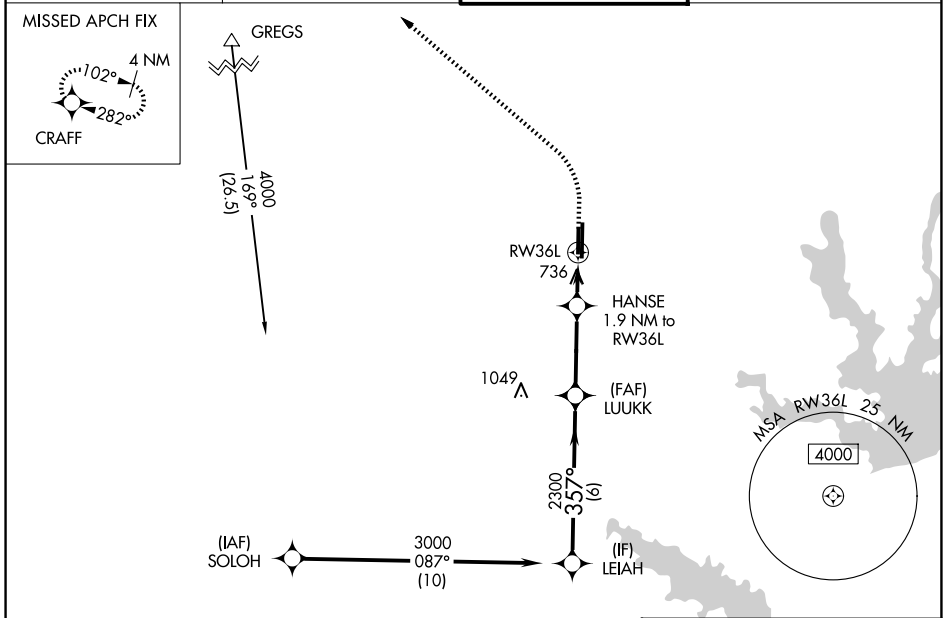
WAAS CH 56543 W36B	APP CRS 357°	Rwy Ldg 36L 5003 36R 6502 TDZE 641 Apt Elev 643	36R 6502 639 643
----------------------------------------	------------------------	-----------------------------------------------------------------------------------------	-------------------------------

RNP APCH - GPS.

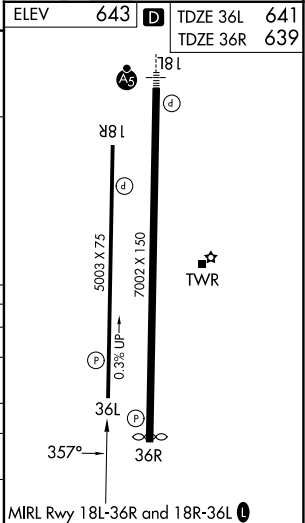
⚠ For uncompensated Baro-VNAV systems, LNAV/VNAV NA below -9°C or above 54°C. Rwy 36L helicopter visibility reduction below 3/4 SM NA.

MISSED APPROACH: Climb to 1500 then climbing left turn to 4000 direct CRAFT and hold, continue climb-in-hold to 4000.

ATIS 119.325	LONE STAR APP CON 118.1 306.95	DENTON TOWER ★ 119.95 (CTAF) 0	GND CON 123.95
------------------------	------------------------------------------	--------------------------------------------------------	--------------------------



LEIAH	3000	357°	LUUKK	2300	HANSE 1.9 NM to RWY 36L	1500	4000	CRAFT
GP 3.00° TCH 42	6 NM		3.2 NM	0.9 NM	1 NM			
	2300		1280		RWY 36L			
CATEGORY	A	B	C	D				
LPV DA		891-3/4	250 (300-3/4)					
LNAV/VNAV DA		992-1	351 (400-1)					
LNAV MDA		1000-1	359 (400-1)					
SIDESTEP 36R	1040-1	401 (400-1)	1040-1 1/2 401 (400-1 1/2)	1040-2 401 (400-2)				
CIRCLING	1100-1 457 (500-1)	1260-1 617 (700-1)	1380-2 737 (800-2)	1380-2 1/4 737 (800-2 1/4)				



SC-2, 16 APR 2026 to 14 MAY 2026

SC-2, 16 APR 2026 to 14 MAY 2026