

WAAS CH <b>72806</b> <b>W18A</b>	APP CRS <b>176°</b>	Rwy Ldg TDZE Apt Elev	<b>6500</b> <b>414</b> <b>425</b>
--	------------------------	-----------------------------	---

# RNAV (GPS) RWY 18

ROSCOE TURNER (CRX)

RNP APCH-GPS.

Baro-VNAV NA when using Selmer altimeter setting. For uncompensated Baro-VNAV systems, LNAV/VNAV NA below -15°C or above 54°C. VDP NA when using Selmer altimeter setting. When local altimeter setting not received, use Selmer altimeter setting and increase LPV DA to 682 feet, increase LNAV/VNAV DA to 812 feet and all visibilities ½ SM; increase all MDAs 80 feet and LNAV visibility Cats C and D ¾ SM and Circling visibility Cats C and D 1½ SM. For inop ALS when using Selmer altimeter setting, increase LPV all Cats visibility to ¾ SM and LNAV visibility Cats C and D to 1½ SM.

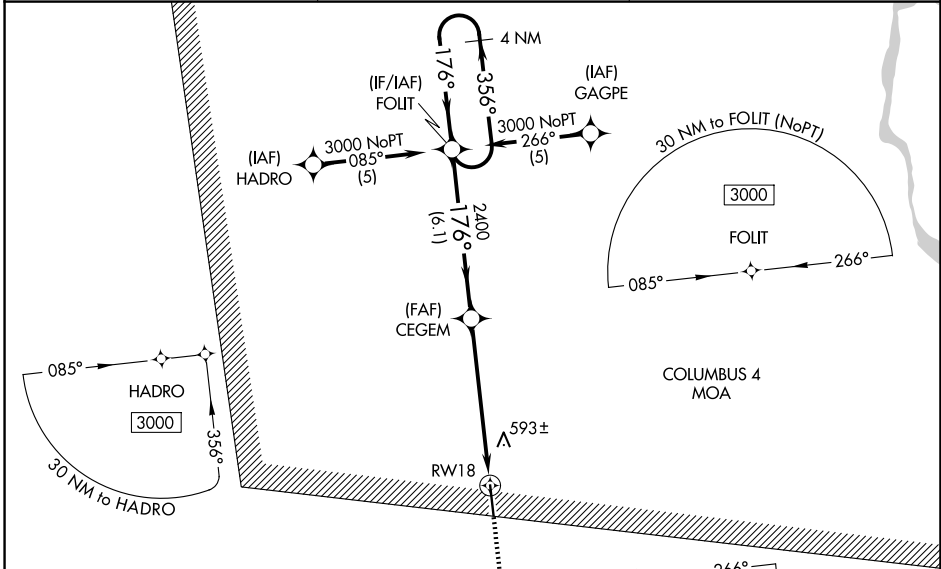


MISSED APPROACH:  
Climb to 3000 direct WEDGO and hold.

AWOS-3PT  
**118.675**

MEMPHIS CENTER  
**135.9 273.55**

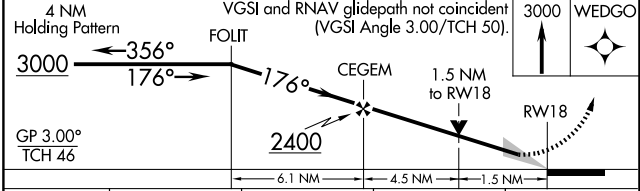
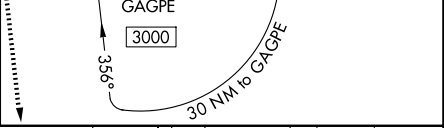
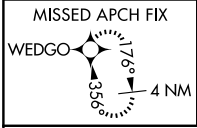
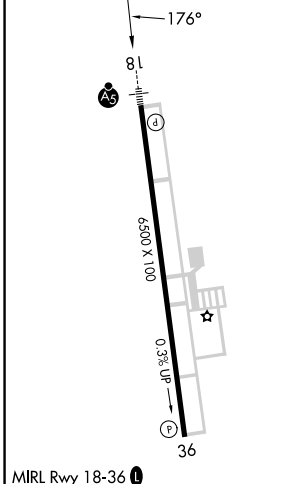
UNICOM  
**122.8 (CTAF) 0**



SC-4, 16 APR 2026 to 14 MAY 2026

SC-4, 16 APR 2026 to 14 MAY 2026

ELEV 425	TDZE 414
----------	----------



CATEGORY	A	B	C	D
LPV DA		614-½	200 (200-½)	
LNAV/VNAV DA		744-½	330 (400-½)	
LNAV MDA	940-½	526 (600-½)	940-1	526 (600-1)
CIRCLING	940-1	515 (600-1)	1100-2 675 (700-2)	1160-2¼ 735 (800-2¼)