

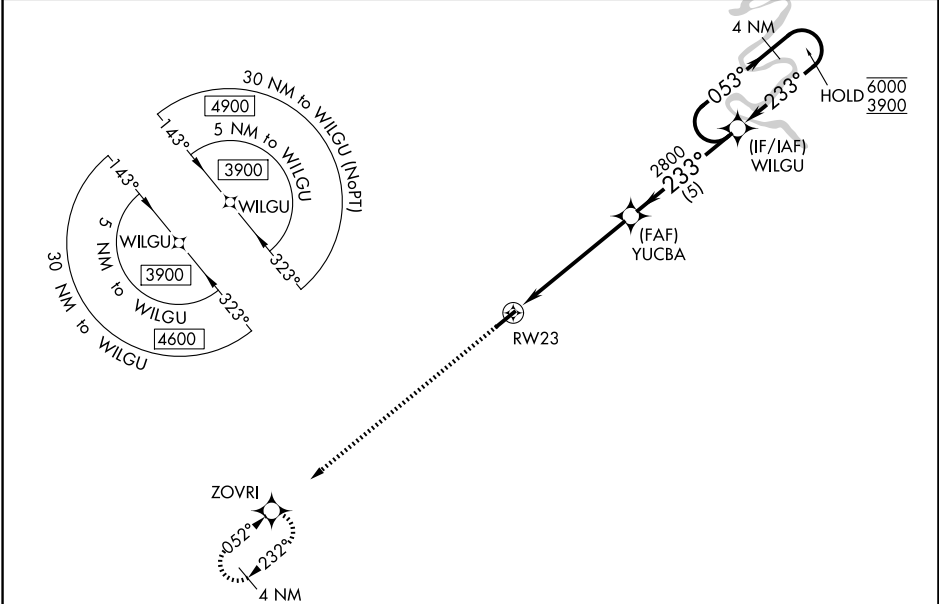
WAAS CH 99433 W23A	APP CRS 233°	Rwy Ldg TDZE Apt Elev	5000 1026 1032
--	------------------------	-----------------------------	---

RNAV (GPS) RWY 23

WARREN COUNTY MEML (RNC)

RNP APCH - GPS.	<p>⚠ Circling Rwy 5 NA at night. Rwy 23 helicopter visibility reduction below $\frac{3}{4}$ SM NA. ⚠ For uncompensated Baro-VNAV systems, LNAV/VNAV NA below -17°C or above 54°C.</p>	<p>MISSED APPROACH: Climb to 3900 direct ZOVRI and hold, continue climb-in-hold to 3900.</p>
-----------------	---	--

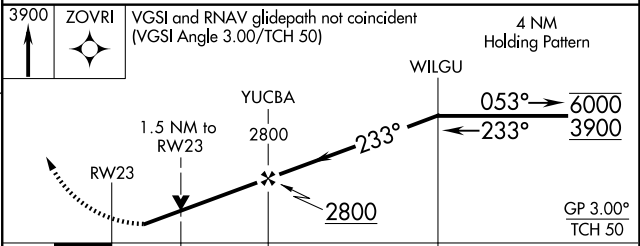
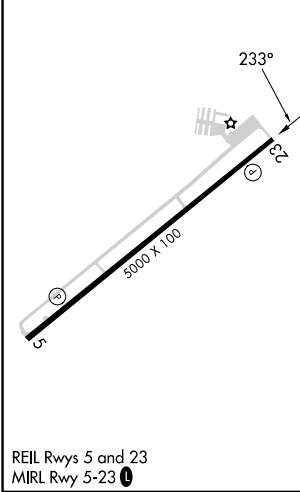
AWOS-3 135.525	MEMPHIS CENTER 128.15 323.125	UNICOM 123.05 (CTAF) 0
--------------------------	---	----------------------------------



SE-1, 16 APR 2026 to 14 MAY 2026

SE-1, 16 APR 2026 to 14 MAY 2026

ELEV 1032	TDZE 1026
-----------	-----------



CATEGORY	A	B	C	D
LPV DA		1312- $\frac{7}{8}$	286 (300- $\frac{7}{8}$)	
LNAV/VNAV DA		1400-1	374 (400-1)	
LNAV MDA	1520-1	494 (500-1)	1520-1 $\frac{3}{8}$	494 (500-1 $\frac{3}{8}$)
CIRCLING	1600-1	568 (600-1)	1600-1 $\frac{1}{2}$ 568 (600-1 $\frac{1}{2}$)	1620-2 588 (600-2)