

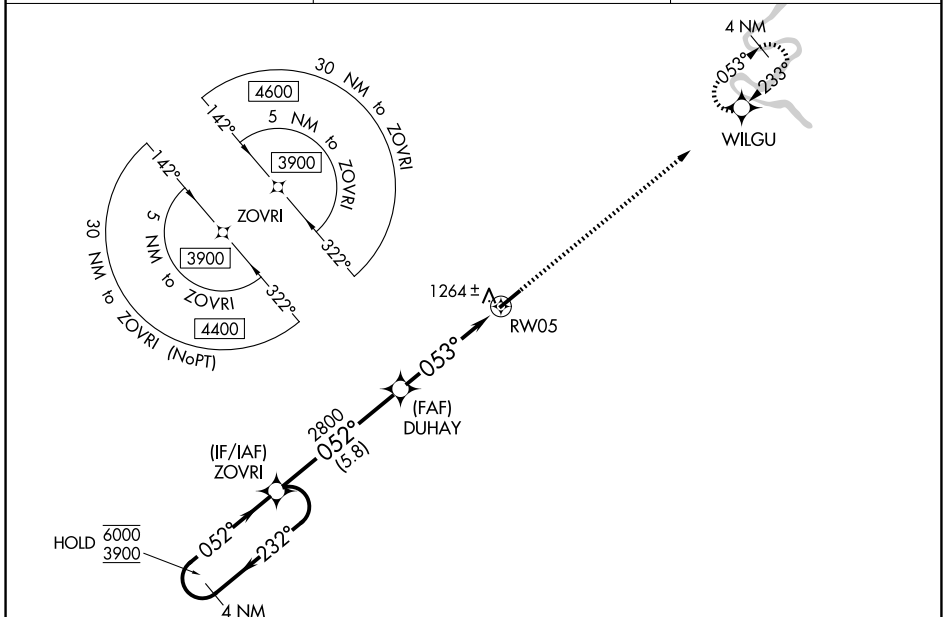
WAAS CH 81844 W05A	APP CRS 053°	Rwy Ldg TDZE Apt Elev	5000 1032 1032
--	------------------------	-----------------------------	---

RNAV (GPS) RWY 5

WARREN COUNTY MEML (R.N.C)

RNP APCH - GPS.	MISSED APPROACH: Climb to 3900 direct WILGU and hold, continue climb-in-hold to 3900.
Rwy 5 helicopter visibility reduction below 1 SM NA. Straight-in Rwy 5 NA at night, Circling Rwy 5 NA at night.	

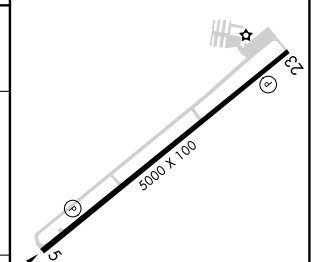
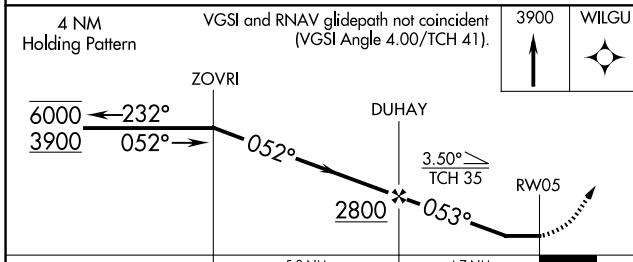
AWOS-3 135.525	MEMPHIS CENTER 128.15 323.125	UNICOM 123.05 (CTAF) 0
--------------------------	---	----------------------------------



SE-1, 16 APR 2026 to 14 MAY 2026

SE-1, 16 APR 2026 to 14 MAY 2026

ELEV	1032	TDZE	1032
------	------	------	------



CATEGORY	A	B	C	D
LP MDA	1500-1	468 (500-1)	1500-1 $\frac{3}{8}$	468 (500-1 $\frac{3}{8}$)
LNAV MDA	1520-1	488 (500-1)	1520-1 $\frac{3}{8}$	488 (500-1 $\frac{3}{8}$)
CIRCLING	1600-1	568 (600-1)	1600-1 $\frac{1}{2}$ 568 (600-1 $\frac{1}{2}$)	1620-2 588 (600-2)

REIL Rwy 5 and 23
MIRL Rwy 5-23 0