

NORFOLK, VIRGINIA

AL-5870 (FAA)

26022

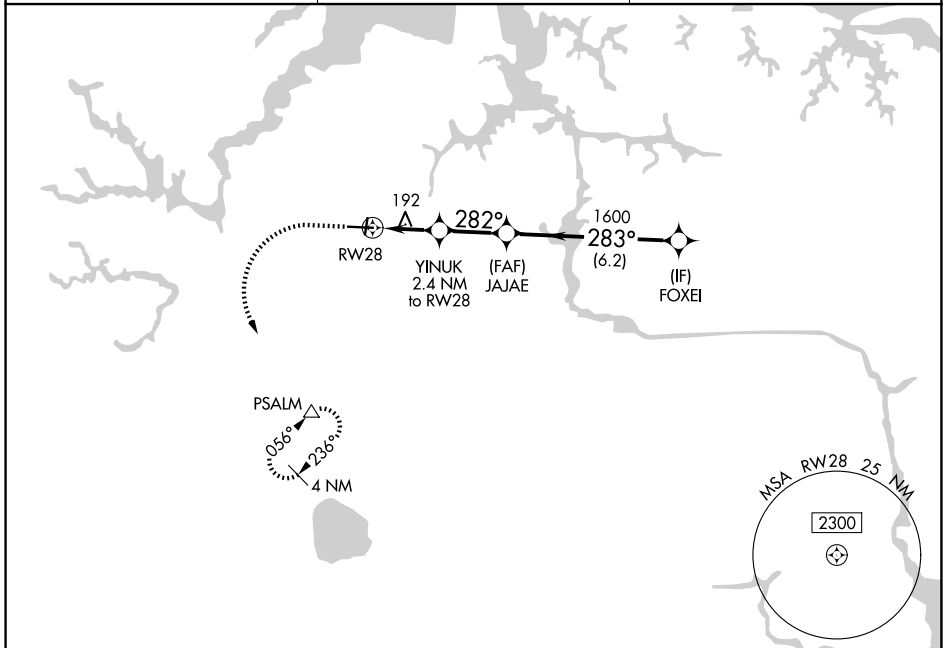
APP CRS	Rwy Ldg	<b>5350</b>
<b>282°</b>	TDZE	<b>25</b>
	Apt Elev	<b>28</b>

# RNAV (GPS) RWY 28

HAMPTON ROADS EXEC (PVG)

RNP APCH.	MISSED APPROACH: Climb to 1600 then climbing left turn to 2500 direct PSALM and hold.
<p>▼ Circling NA to Rwys 2 and 20.                  Circling Cat C NA north of Rwy 10-28.                  Rwy 28 helicopter visibility reduction below 1 SM NA.</p>	

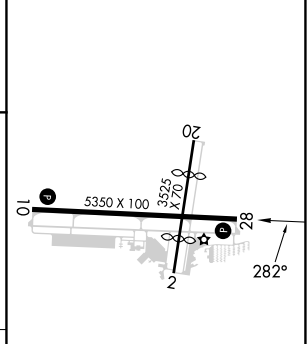
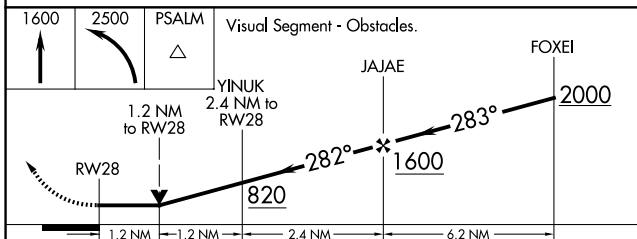
AWOS-3PT <b>118.375</b>	NORFOLK APP CON <b>118.9 353.7</b>	UNICOM <b>122.725 (CTAF) 0</b>
----------------------------	---------------------------------------	-----------------------------------



NE-3, 16 APR 2026 to 14 MAY 2026

NE-3, 16 APR 2026 to 14 MAY 2026

ELEV	<b>28</b>	TDZE	<b>25</b>
------	-----------	------	-----------



CATEGORY	A	B	C	D
LNNAV MDA	460-1	435 (500-1)	460-1¼ 435 (500-1¼)	NA
CIRCLING	500-1	472 (500-1)	780-2 752 (800-2)	NA

HIRL Rwy 10-28 0  
 MIRL Rwy 2-20 0  
 REIL Rwys 10 and 28 0

NORFOLK, VIRGINIA  
 Orig 15AUG19

36°47'N-76°27'W

# HAMPTON ROADS EXEC (PVG) RNAV (GPS) RWY 28