

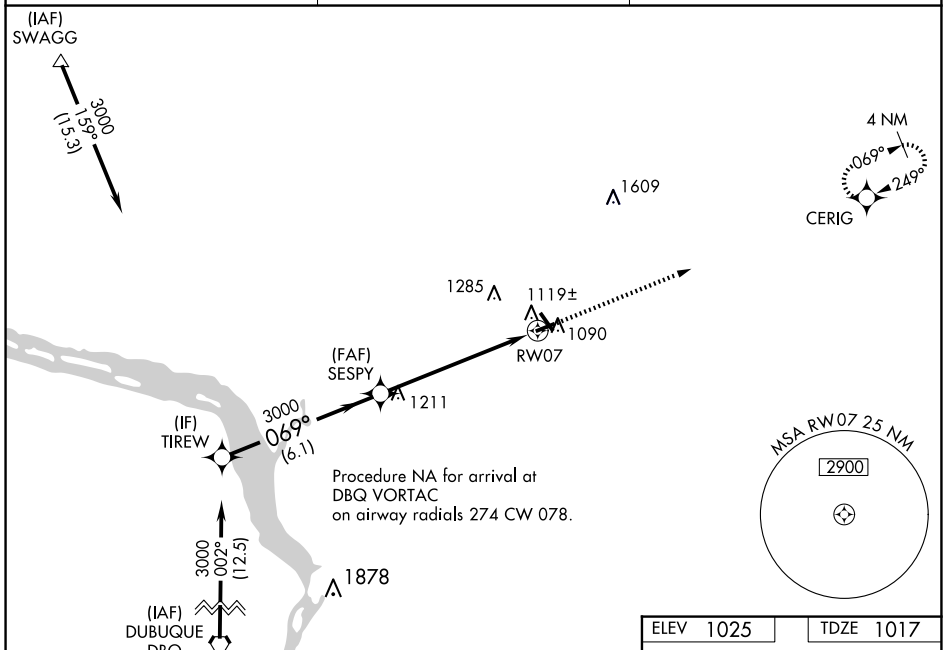
WAAS CH <b>82315</b> <b>W07A</b>	APP CRS <b>069°</b>	Rwy Idg TDZE Apt Elev <b>3600</b> <b>1017</b> <b>1025</b>
--	------------------------	--

# RNAV (GPS) RWY 7

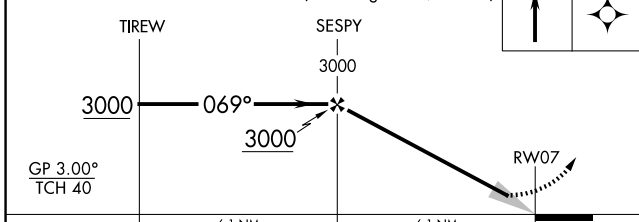
PLATTEVILLE MUNI (PVB)

RNP APCH - GPS.	<p><b>MISSED APPROACH:</b> Climb to 3000 direct CERIG and hold.</p>
<p>▼ For uncompensated Baro-VNAV systems, LNAV/VNAV NA below -17°C or above 54°C. Straight-in Rwy 7 NA at night, Circling Rwy 7, 25 NA at night. Rwy 7 helicopter visibility reduction below 1 SM NA.</p>	

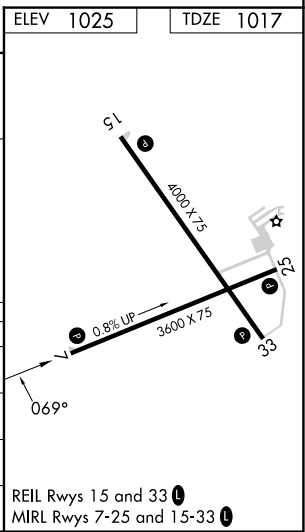
AWOS-3 <b>120.575</b>	CHICAGO CENTER <b>133.95 281.4</b>	UNICOM <b>122.7 (CTAF) 0</b>
--------------------------	---------------------------------------	---------------------------------



VGSI and RNAV glidepath not coincident (VGSI Angle 3.00/TCH 20).



CATEGORY	A	B	C	D
LPV DA	1284-1	267 (300-1)		NA
LNAV/VNAV DA	1407-1½	390 (400-1½)		NA
LNAV MDA	1480-1	463 (500-1)		NA
CIRCLING	1480-1 455 (500-1)	1600-1 575 (600-1)	1600-1½ 575 (600-1½)	NA



EC-3, 16 APR 2026 to 14 MAY 2026

EC-3, 16 APR 2026 to 14 MAY 2026