

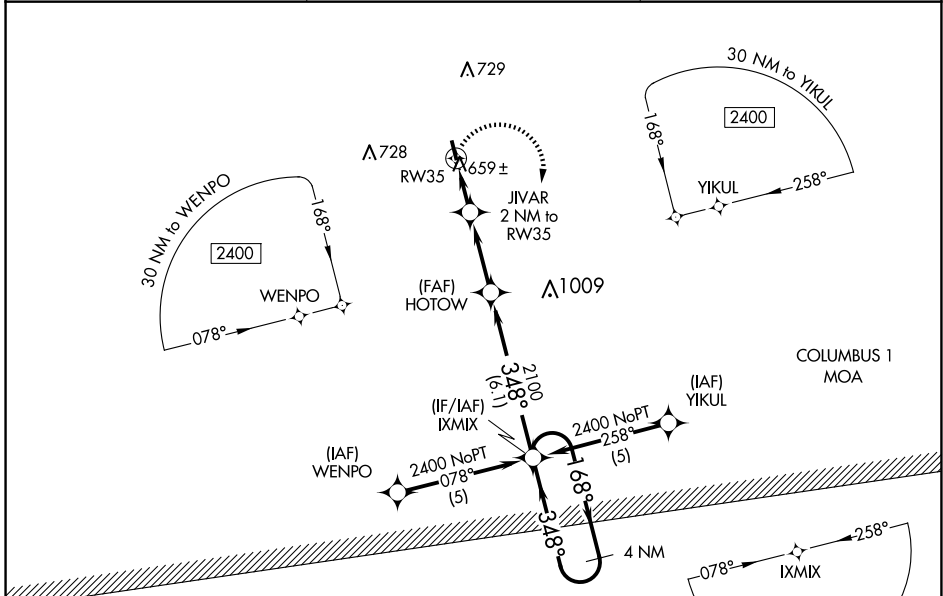
APP CRS	Rwy Idg	3613
348°	TDZE	463
	Apt Elev	463

RNAV (GPS) RWY 35

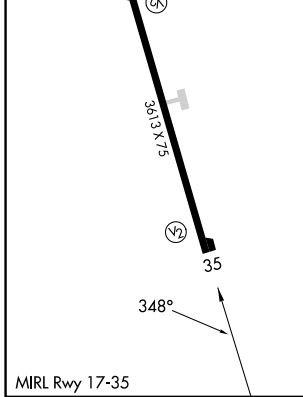
LAMAR COUNTY (M55)

RNP APCH.	Use Columbus AFB altimeter setting; when not received use Golden Triangle Rgnl altimeter setting and increase all MDA 40 feet and Circling Cats C/D visibility ¼ mile. Procedure NA at night. Rwy 35 helicopter visibility reduction below 1 SM NA.	MISSED APPROACH: Climbing right turn to 2400 direct IXMIX and hold.
▼ NA ▲ NA		

KCBM ATIS* 115.2 273.5	COLUMBUS APP CON* 126.075 239.25	CTAF 122.9
----------------------------------	--	----------------------



ELEV 463	TDZE 463
----------	----------



2400	IXMIX	Visual Segment - Obstacles.	4 NM Holding Pattern
HOTOW JIVAR 2 NM to RW35 RW35 1120 2100 348° 168° 2400			
→ 2 NM		← 6.1 NM	
CATEGORY	A	B	D
LNAV MDA	1000-1	537 (600-1)	1000-1½ 537 (600-1½)
CIRCLING	1100-1	637 (700-1)	1180-2 717 (800-2)

SE-4, 16 APR 2026 to 14 MAY 2026

SE-4, 16 APR 2026 to 14 MAY 2026