

| | | |
|--|------------------------|---|
| WAAS CH 87104 W18A | APP CRS 185° | Rwy Ldg TDZE 418 Apt Elev 418 |
|--|------------------------|---|

RNAV (GPS) RWY 18

PERRY-HOUSTON COUNTY (PXE)

RNP APCH-GPS.

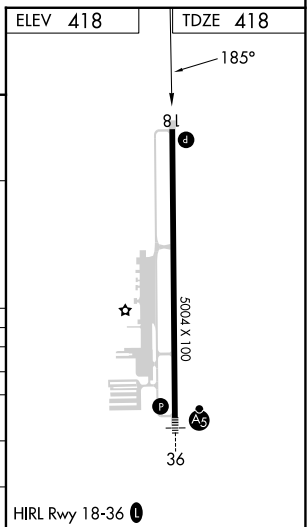
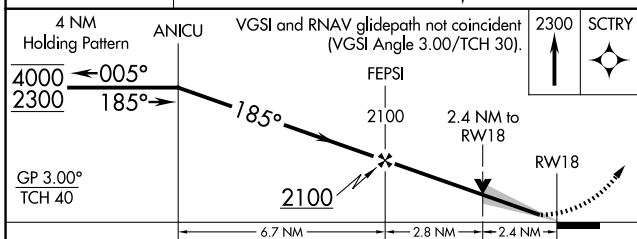
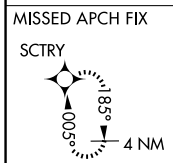
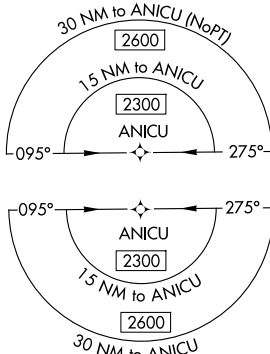
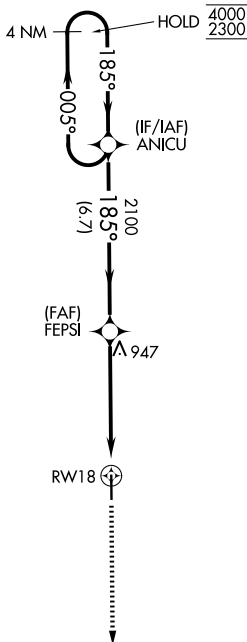
Baro-VNAV and VDP NA when using Middle Georgia Rgnl altimeter setting.

For uncompensated Baro-VNAV systems, LNAV/VNAV NA below -15°C or above 54°C.

When local altimeter setting not received, use Middle Georgia Rgnl altimeter setting and increase LPV DA to 656 feet; increase LNAV/VNAV DA to 857 feet and all visibilities ½ SM. Increase all MDAs 40 feet; and Circling visibility Cat A and D ¼ SM.

MISSED APPROACH: Climb to 2300 direct SCTRY and hold.

| | | |
|--------------------------|--|---------------------------------|
| AWOS-3 123.825 | ATLANTA APP CON* 124.2 279.6 | UNICOM 122.725 (CTAF) |
|--------------------------|--|---------------------------------|



| CATEGORY | A | B | C | D |
|--------------|-----------------------|-------------------------------|-------------------------------|-------------------------------|
| LPV DA | | 618-3/4 | 200 (200-3/4) | |
| LNAV/VNAV DA | | 819-1 1/8 | 401 (500-1 1/8) | |
| LNAV MDA | 1200-1 782 (800-1) | 1200-1 1/4 782 (800-1 1/4) | 1200-2 1/2 782 (800-2 1/2) | 782 (800-2 1/2) |
| CIRCLING | 1200-1 782 (800-1) | 1200-1 1/4 782 (800-1 1/4) | 1200-2 1/2 782 (800-2 1/2) | 1280-2 3/4 862 (900-2 3/4) |