

LOC/DME I-EVO 111.55 Chan 52 (Y)	APP CRS 001°	Rwy Ldg TDZE 401 Apt Elev 402
--	------------------------	---

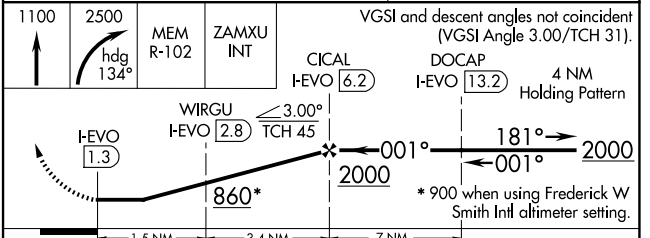
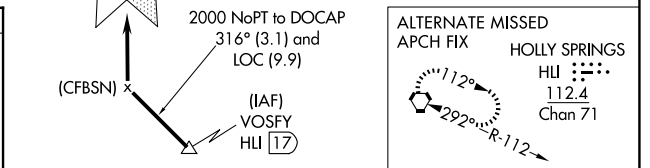
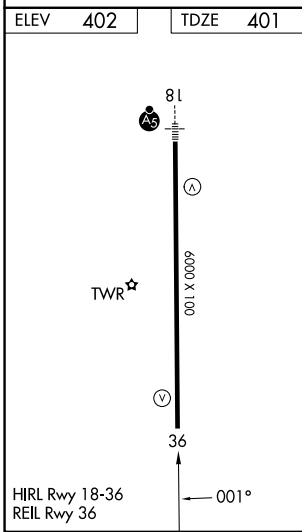
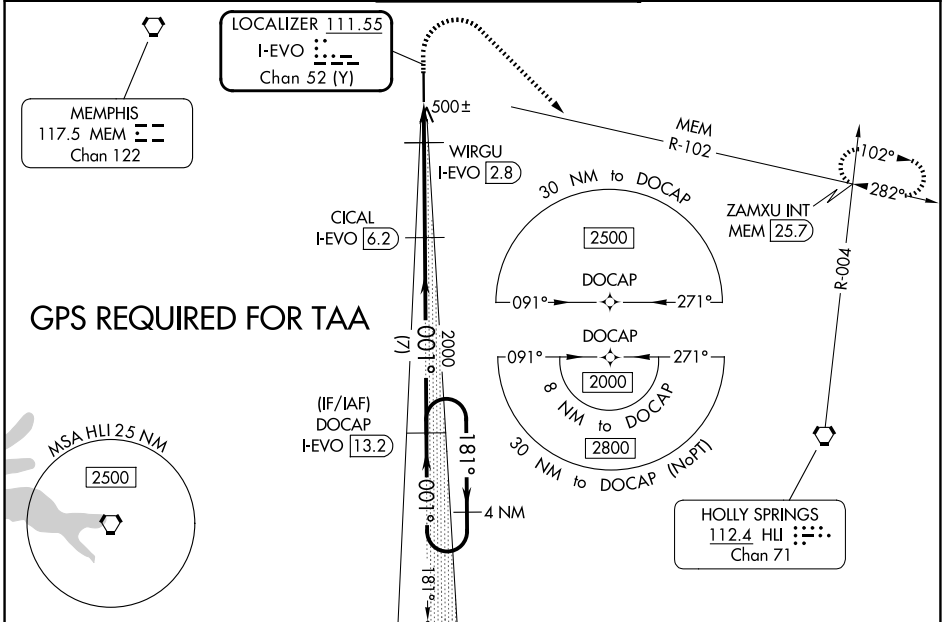
LOC RWY 36

OLIVE BRANCH/TAYLOR FLD (OLV)

▼ When local altimeter setting not received, use Frederick W Smith Intl altimeter setting and increase all MDA 40 feet; increase S-LOC 36 Cats C and D visibility 1/8 mile and Circling Cats C and D visibility 1/4 mile. Rwy 36 helicopter visibility reduction below 3/4 SM NA. DME required.

▲ MISSED APPROACH: Climb to 1100 then climbing right turn to 2500 on heading 134° and MEM VORTAC R-102 to ZAMXU INT/MEM 25.7 DME and hold.

ATIS 119.925	MEMPHIS APP CON 125.8 338.3	OLIVE BRANCH TOWER ★ 125.275 (CTAF) 0	GND CON 121.2	UNICOM 122.95
------------------------	---------------------------------------	---	-------------------------	-------------------------



CATEGORY	A	B	C	D
S-36	760-1 359 (400-1)			
CIRCLING	1060-1	658 (700-1)	1060-1 3/4 658 (700-1 3/4)	1200-2 1/2 798 (800-2 1/2)

SC-4, 16 APR 2026 to 14 MAY 2026

SC-4, 16 APR 2026 to 14 MAY 2026