


WAAS CH 61199 W18A	APP CRS 181°	Rwy Ldg TDZE Apt Elev 6000 402 402
--	------------------------	--

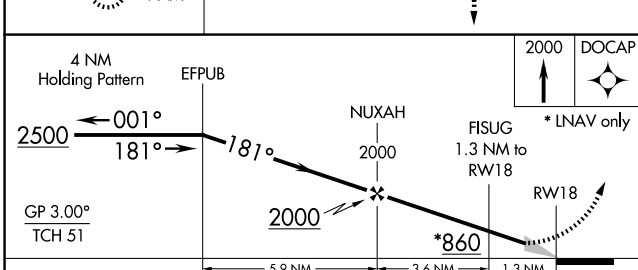
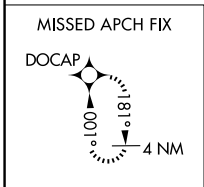
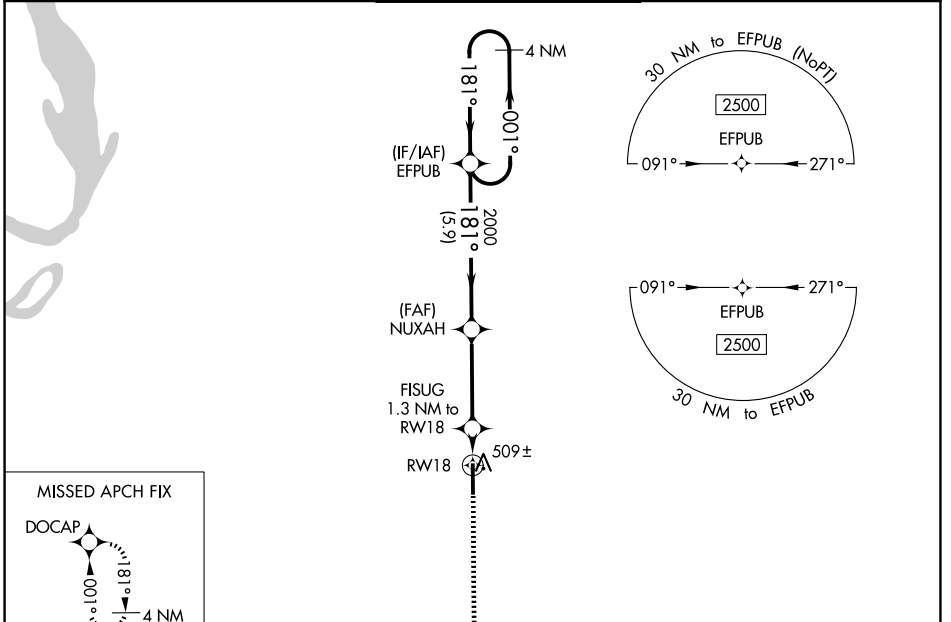
RNAV (GPS) RWY 18


OLIVE BRANCH/TAYLOR FLD (OLV)

⚠ For uncompensated Baro-VNAV systems, LNAV/VNAV NA below -15°C (5°F) or above 54°C (130°F). DME/DME RNP-0.3 NA. When local altimeter setting not received, use Frederick W Smith Intl altimeter setting and increase all DA 32 feet and all MDA 40 feet; increase LNAV/VNAV all Cats visibility 1/8 mile and Circling Cats C and D visibility 1/4 mile.

MALSRL  **MISSED APPROACH:** Climb to 2000 direct DOCAP and hold.

ATIS 119,925	MEMPHIS APP CON 125.8 338.3	OLIVE BRANCH TOWER ★ 125.275 (CTAF) 0	GND CON 121.2	UNICOM 122.95
------------------------	---------------------------------------	---	-------------------------	-------------------------



ELEV 402	TDZE 402
181°	81
	6000 X 100
TWR ★	36
HIRL Rwy 18-36	REIL Rwy 36

CATEGORY	A	B	C	D
LPV DA		602-1/2	200 (200-1/2)	
LNAV/VNAV DA		691-1/2	289 (300-1/2)	
LNAV MDA	760-1/2	358 (400-1/2)	760-5/8	358 (400-5/8)
CIRCLING	1060-1	658 (700-1)	1060-1 3/4 658 (700-1 3/4)	1200-2 1/2 798 (800-2 1/2)

SC-4, 16 APR 2026 to 14 MAY 2026

SC-4, 16 APR 2026 to 14 MAY 2026