

RNAV 1- DME/DME/IRU or GPS.
RADAR required.

MMARY.MMARY1) 17APR25

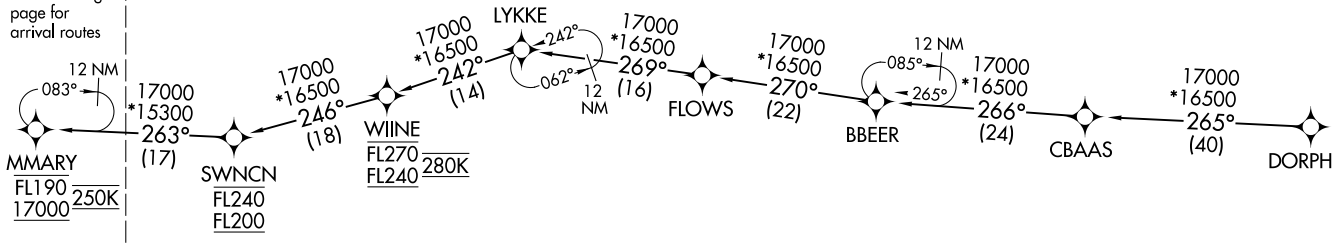
MMARY ONE ARRIVAL (RNAV) Transition Routes

ASPEN, COLORADO

DENVER CENTER
128.65 282.2
ASPEN APP CON ★
123.8 288.3
ASE ATIS
120.4
ASPEN TOWER ★
118.85 (CTAF) 288.3



See following page for arrival routes



MMARY.MMARY1) 26078

MMARY ONE ARRIVAL (RNAV) Transition Routes

ASPEN, COLORADO

AL-5889 (FAA)

DORPH TRANSITION (DORPH.MMARY1)

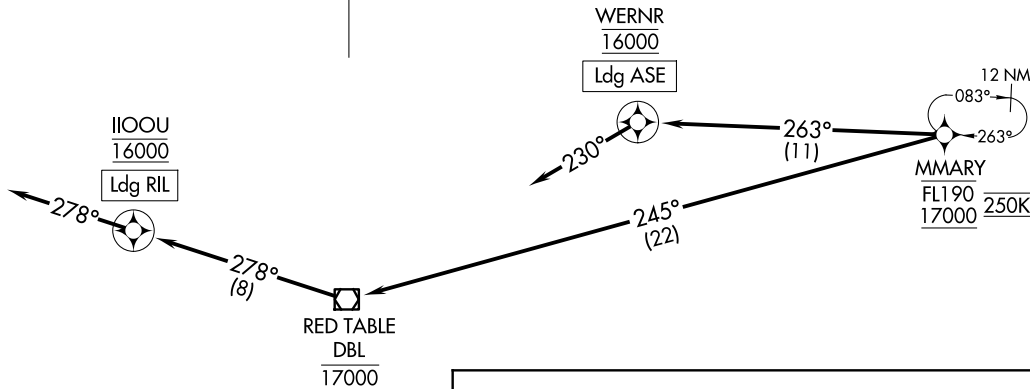
NOTE: Chart not to scale.

(CONTINUED ON FOLLOWING PAGE)

RNAV 1- DME/DME/IRU or GPS.
RADAR required.

DENVER CENTER
128.65 282.2
ASPEN APP CON ★
ASE ATIS
123.8 288.3
120.4
ASPEN TOWER★
118.85 (CTAF) 288.3

N



ARRIVAL ROUTE DESCRIPTION

LANDING ASE: From MMARY on track 263° to cross WERNR at 16000, then on track 230°. Expect RADAR vectors to final approach course.

LANDING RIL: From MMARY on track 245° to cross DBL VOR/DME at 17000, then on track 278° to cross IIOOU at 16000, then on track 278°. Expect RADAR vectors to final approach course.

NOTE: Chart not to scale.

ASPEN PITKIN COUNTY/ SARDY FLD

MMARY .MMARY1) 26078
MMARY .MMARY1) 17ARR25
MMARY ONE ARRIVAL (RNAV) Arrival Routes

ASPEN, COLORADO

MMARY .MMARY1) 26078
MMARY ONE ARRIVAL (RNAV) Arrival Routes

ASPEN, COLORADO

AL-5889 (FAA)