

APP CRS	Rwy Ldg TDZE	N/A
166°	Apt Elev	7838

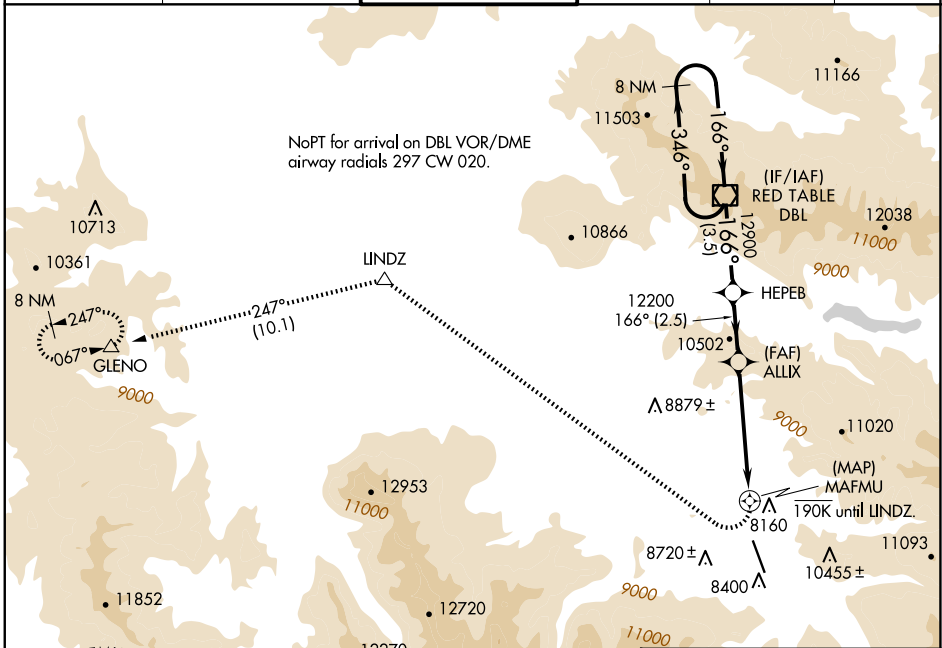
RNAV (GPS)-F

ASPEN-PITKIN COUNTY/SARDY FLD (A5E)

When local altimeter setting not received, procedure NA.
 DME/DME RNP-0.3 NA. Visibility reduction by helicopters NA.
 Procedure NA at night. Circling NA for Cat C southwest of Rwy 15-33.

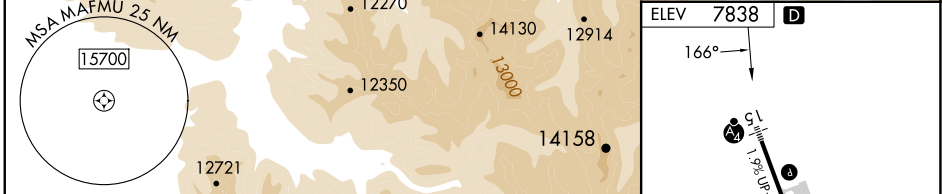
MISSED APPROACH: Climbing right turn to 14000 direct LINDZ and on track 247° to GLENO and hold.

ATIS	ASPEN APP CON *	ASPEN TOWER *	GND CON	CLNC DEL	UNICOM
120.4	123.8 288.3	118.85 (CTAF) 288.3	121.9	123.75	122.95

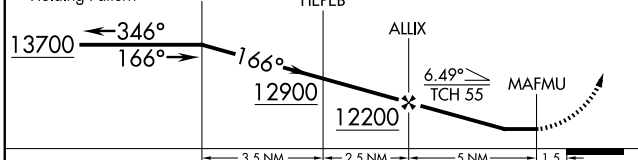


SW-1, 16 APR 2026 to 14 MAY 2026

SW-1, 16 APR 2026 to 14 MAY 2026



VGSIs and descent angles not coincident (VGSIs Angle 3.50/TCH 55).			
14000	LINDZ	tr 247°	GLENO
	△		△



CATEGORY	A	B	C	D
CIRCLING	10200-1¾ 2362 (2400-1¾)	10220-1¾ 2382 (2400-1¾)	10960-3 3122 (3200-3)	NA

REIL Rwy 15
 REIL Rwy 33 **1**
 MIRL Rwy 15-33 **1**

RNAV (GPS)-F